



SPINE, NAILING, LOCKING PLATES AND SCREWS

SPINE, NAILING, LOCKING
PLATES AND SCREWS



edition
2021



about us

Auxein Medical is an integrated, research based, orthopaedic Implants & Instruments manufacturing company, producing a wide range of quality, affordable generic implants, trusted by healthcare professionals and patients across geographies. It is the Company's constant endeavor to provide a wide basket of generic and innovator products that exceed the highest expectations of our customers in term of quality and safety. The company has world-class manufacturing unit established in India and serves customers in over 60 countries worldwide.

Our Achievements

US FDA 510K APPROVED •

(Spine, Nailing, Locking Plates and Screws)

EC Certificate - Class IIa & IIb •

ISO 13485:2016 •

ISO 9001:2015 •

India FDA Approved •

India MDR 2017 •

Index

EXPERT TIBIA NAILING SYSTEM

AJAX NAILING SYSTEM

ELASTIC NAILING SYSTEM

RETROGRADE FEMUR NAILING SYSTEM

EXPERT FEMUR NAILING SYSTEM

GA-MMA NAILING SYSTEM

HUMERUS NAILING SYSTEM

WISE-LOCK BONE PLATES

VERTAUX 5.5 MM PEDICLE SCREW SYSTEM

Expert Tibia Nailing System

Expert Tibia Nail

	Code	Dia x Length
Ø8mm	TI-520-08-255	Ø8mm x 255mm
	TI-520-08-270	Ø8mm x 270mm
	TI-520-08-285	Ø8mm x 285mm
	TI-520-08-300	Ø8mm x 300mm
	TI-520-08-315	Ø8mm x 315mm
	TI-520-08-330	Ø8mm x 330mm
	TI-520-08-345	Ø8mm x 345mm
	TI-520-08-360	Ø8mm x 360mm
	TI-520-08-375	Ø8mm x 375mm
Ø9mm	TI-520-09-255	Ø9mm x 255mm
	TI-520-09-270	Ø9mm x 270mm
	TI-520-09-285	Ø9mm x 285mm
	TI-520-09-300	Ø9mm x 300mm
	TI-520-09-315	Ø9mm x 315mm
	TI-520-09-330	Ø9mm x 330mm
	TI-520-09-345	Ø9mm x 345mm
	TI-520-09-360	Ø9mm x 360mm
	TI-520-09-375	Ø9mm x 375mm
Ø10mm	TI-520-10-255	Ø10mm x 255mm
	TI-520-10-270	Ø10mm x 270mm
	TI-520-10-285	Ø10mm x 285mm
	TI-520-10-300	Ø10mm x 300mm
	TI-520-10-315	Ø10mm x 315mm
	TI-520-10-330	Ø10mm x 330mm
	TI-520-10-345	Ø10mm x 345mm
	TI-520-10-360	Ø10mm x 360mm
	TI-520-10-375	Ø10mm x 375mm



	Code	Dia x Length
Ø11mm	TI-520-11-255	Ø11mm x 255mm
	TI-520-11-270	Ø11mm x 270mm
	TI-520-11-285	Ø11mm x 285mm
	TI-520-11-300	Ø11mm x 300mm
	TI-520-11-315	Ø11mm x 315mm
	TI-520-11-330	Ø11mm x 330mm
	TI-520-11-345	Ø11mm x 345mm
	TI-520-11-360	Ø11mm x 360mm
	TI-520-11-375	Ø11mm x 375mm
Ø12mm	TI-520-12-255	Ø12mm x 255mm
	TI-520-12-270	Ø12mm x 270mm
	TI-520-12-285	Ø12mm x 285mm
	TI-520-12-300	Ø12mm x 300mm
	TI-520-12-315	Ø12mm x 315mm
	TI-520-12-330	Ø12mm x 330mm
	TI-520-12-345	Ø12mm x 345mm
	TI-520-12-360	Ø12mm x 360mm
	TI-520-12-375	Ø12mm x 375mm

**Ø4.8mm Locking Bolt, Self-Tapping,
For Expert Tibia Nail**


Titanium	Length (mm)
TI-520-002-18	18
TI-520-002-20	20
TI-520-002-25	25
TI-520-002-30	30
TI-520-002-35	35
TI-520-002-40	40
TI-520-002-45	45
TI-520-002-50	50
TI-520-002-55	55
TI-520-002-60	60
TI-520-002-65	65
TI-520-002-70	70
TI-520-002-75	75
TI-520-002-80	80
TI-520-002-85	85
TI-520-002-90	90

**Ø4.4mm Locking Bolt, Self-Tapping,
For Expert Tibia Nail**


Titanium	Length (mm)
TI-520-058-24	24
TI-520-058-26	26
TI-520-058-28	28
TI-520-058-30	30
TI-520-058-32	32
TI-520-058-34	34
TI-520-058-36	36
TI-520-058-38	38
TI-520-058-40	40
TI-520-058-42	42
TI-520-058-44	44
TI-520-058-46	46
TI-520-058-48	48
TI-520-058-50	50
TI-520-058-52	52
TI-520-058-54	54
TI-520-058-56	56
TI-520-058-58	58
TI-520-058-60	60
TI-520-058-62	62
TI-520-058-64	64
TI-520-058-66	66
TI-520-058-68	68
TI-520-058-70	70
TI-520-058-72	72
TI-520-058-74	74
TI-520-058-76	76
TI-520-058-78	78
TI-520-058-80	80
TI-520-058-82	82
TI-520-058-84	84
TI-520-058-86	86
TI-520-058-88	88
TI-520-058-90	90

End Cap For Expert Tibia Nail


Titanium	Length (mm)
TI-520-001	0
TI-520-001-05	5
TI-520-001-10	10
TI-520-001-15	15

Ajax Nailing System

130° AJAX Advance Nail, Short

Short

Dia	Length	Code (Titanium)
9mm	170mm	TI-6085S-09-170
9mm	200mm	TI-6085S-09-200
9mm	240mm	TI-6085S-09-240
10mm	170mm	TI-6085S-10-170
10mm	200mm	TI-6085S-10-200
10mm	240mm	TI-6085S-10-240
11mm	170mm	TI-6085S-11-170
11mm	200mm	TI-6085S-11-200
11mm	240mm	TI-6085S-11-240
12mm	170mm	TI-6085S-12-170
12mm	200mm	TI-6085S-12-200
12mm	240mm	TI-6085S-12-240



130° AJAX Advance Nail, Long

Long

Dia	Length	Left (Titanium)	Right (Titanium)
9mm	260mm	TI-6085L-09-260L	TI-6085L-09-260R
9mm	280mm	TI-6085L-09-280L	TI-6085L-09-280R
9mm	300mm	TI-6085L-09-300L	TI-6085L-09-300R
9mm	320mm	TI-6085L-09-320L	TI-6085L-09-320R
9mm	340mm	TI-6085L-09-340L	TI-6085L-09-340R
9mm	360mm	TI-6085L-09-360L	TI-6085L-09-360R
9mm	380mm	TI-6085L-09-380L	TI-6085L-09-380R
9mm	400mm	TI-6085L-09-400L	TI-6085L-09-400R
9mm	420mm	TI-6085L-09-420L	TI-6085L-09-420R
10mm	260mm	TI-6085L-10-260L	TI-6085L-10-260R
10mm	280mm	TI-6085L-10-280L	TI-6085L-10-280R
10mm	300mm	TI-6085L-10-300L	TI-6085L-10-300R
10mm	320mm	TI-6085L-10-320L	TI-6085L-10-320R
10mm	340mm	TI-6085L-10-340L	TI-6085L-10-340R
10mm	360mm	TI-6085L-10-360L	TI-6085L-10-360R
10mm	380mm	TI-6085L-10-380L	TI-6085L-10-380R
10mm	400mm	TI-6085L-10-400L	TI-6085L-10-400R
10mm	420mm	TI-6085L-10-420L	TI-6085L-10-420R
11mm	260mm	TI-6085L-11-260L	TI-6085L-11-260R
11mm	280mm	TI-6085L-11-280L	TI-6085L-11-280R
11mm	300mm	TI-6085L-11-300L	TI-6085L-11-300R
11mm	320mm	TI-6085L-11-320L	TI-6085L-11-320R
11mm	340mm	TI-6085L-11-340L	TI-6085L-11-340R
11mm	360mm	TI-6085L-11-360L	TI-6085L-11-360R
11mm	380mm	TI-6085L-11-380L	TI-6085L-11-380R
11mm	400mm	TI-6085L-11-400L	TI-6085L-11-400R
11mm	420mm	TI-6085L-11-420L	TI-6085L-11-420R
12mm	260mm	TI-6085L-12-260L	TI-6085L-12-260R
12mm	280mm	TI-6085L-12-280L	TI-6085L-12-280R
12mm	300mm	TI-6085L-12-300L	TI-6085L-12-300R
12mm	320mm	TI-6085L-12-320L	TI-6085L-12-320R
12mm	340mm	TI-6085L-12-340L	TI-6085L-12-340R
12mm	360mm	TI-6085L-12-360L	TI-6085L-12-360R
12mm	380mm	TI-6085L-12-380L	TI-6085L-12-380R
12mm	400mm	TI-6085L-12-400L	TI-6085L-12-400R
12mm	420mm	TI-6085L-12-420L	TI-6085L-12-420R



Left

Right

125° AJAX Nail, Short, Titanium

Dia	Length	Titanium
9mm	170mm	TI-6086S-09-170
9mm	200mm	TI-6086S-09-200
9mm	240mm	TI-6086S-09-240
10mm	170mm	TI-6086S-10-170
10mm	200mm	TI-6086S-10-200
10mm	240mm	TI-6086S-10-240
11mm	170mm	TI-6086S-11-170
11mm	200mm	TI-6086S-11-200
11mm	240mm	TI-6086S-11-240
12mm	170mm	TI-6086S-12-170
12mm	200mm	TI-6086S-12-200
12mm	240mm	TI-6086S-12-240

Short



125° AJAX Nail, Long, Titanium

Dia	Length	Left (Titanium)	Right (Titanium)
9mm	260mm	TI-6086L-09-260L	TI-6086L-9-260R
9mm	280mm	TI-6086L-09-280L	TI-6086L-9-280R
9mm	300mm	TI-6086L-09-300L	TI-6086L-9-300R
9mm	320mm	TI-6086L-09-320L	TI-6086L-9-320R
9mm	340mm	TI-6086L-09-340L	TI-6086L-9-340R
9mm	360mm	TI-6086L-09-360L	TI-6086L-9-360R
9mm	380mm	TI-6086L-09-380L	TI-6086L-9-380R
9mm	400mm	TI-6086L-09-400L	TI-6086L-9-400R
9mm	420mm	TI-6086L-09-420L	TI-6086L-9-420R
10mm	260mm	TI-6086L-10-260L	TI-6086L-10-260R
10mm	280mm	TI-6086L-10-280L	TI-6086L-10-280R
10mm	300mm	TI-6086L-10-300L	TI-6086L-10-300R
10mm	320mm	TI-6086L-10-320L	TI-6086L-10-320R
10mm	340mm	TI-6086L-10-340L	TI-6086L-10-340R
10mm	360mm	TI-6086L-10-360L	TI-6086L-10-360R
10mm	380mm	TI-6086L-10-380L	TI-6086L-10-380R
10mm	400mm	TI-6086L-10-400L	TI-6086L-10-400R
10mm	420mm	TI-6086L-10-420L	TI-6086L-10-420R
11mm	260mm	TI-6086L-11-260L	TI-6086L-11-260R
11mm	280mm	TI-6086L-11-280L	TI-6086L-11-280R
11mm	300mm	TI-6086L-11-300L	TI-6086L-11-300R
11mm	320mm	TI-6086L-11-320L	TI-6086L-11-320R
11mm	340mm	TI-6086L-11-340L	TI-6086L-11-340R
11mm	360mm	TI-6086L-11-360L	TI-6086L-11-360R
11mm	380mm	TI-6086L-11-380L	TI-6086L-11-380R
11mm	400mm	TI-6086L-11-400L	TI-6086L-11-400R
11mm	420mm	TI-6086L-11-420L	TI-6086L-11-420R
12mm	260mm	TI-6086L-12-260L	TI-6086L-12-260R
12mm	280mm	TI-6086L-12-280L	TI-6086L-12-280R
12mm	300mm	TI-6086L-12-300L	TI-6086L-12-300R
12mm	320mm	TI-6086L-12-320L	TI-6086L-12-320R
12mm	340mm	TI-6086L-12-340L	TI-6086L-12-340R
12mm	360mm	TI-6086L-12-360L	TI-6086L-12-360R
12mm	380mm	TI-6086L-12-380L	TI-6086L-12-380R
12mm	400mm	TI-6086L-12-400L	TI-6086L-12-400R
12mm	420mm	TI-6086L-12-420L	TI-6086L-12-420R



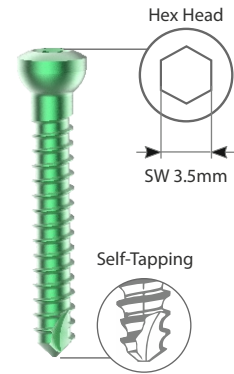
Left

Right

AJAX 4.9mm Locking Bolt

Length	Code (Titanium)
26mm	TI-6085-01-026
28mm	TI-6085-01-028
30mm	TI-6085-01-030
32mm	TI-6085-01-032
34mm	TI-6085-01-034
36mm	TI-6085-01-036
38mm	TI-6085-01-038
40mm	TI-6085-01-040
42mm	TI-6085-01-042
44mm	TI-6085-01-044
46mm	TI-6085-01-046
48mm	TI-6085-01-048
50mm	TI-6085-01-050
52mm	TI-6085-01-052
54mm	TI-6085-01-054
56mm	TI-6085-01-056

Length	Code (Titanium)
58mm	TI-6085-01-058
60mm	TI-6085-01-060
62mm	TI-6085-01-062
64mm	TI-6085-01-064
66mm	TI-6085-01-066
68mm	TI-6085-01-068
70mm	TI-6085-01-070
72mm	TI-6085-01-072
74mm	TI-6085-01-074
76mm	TI-6085-01-076
78mm	TI-6085-01-078
80mm	TI-6085-01-080
85mm	TI-6085-01-085
90mm	TI-6085-01-090
95mm	TI-6085-01-095
100mm	TI-6085-01-100



End Cap for cephalic Screw

Length	Code (Titanium)
0mm	TI-6085-04-000
5mm	TI-6085-04-005
10mm	TI-6085-04-010
15mm	TI-6085-04-015



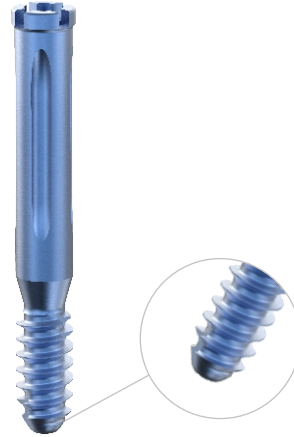
Inner Screws for cephalic screw

Code (Titanium)
TI-6085-05



AJAX Cephalic Screws, Titanium

Length	Code (Titanium)
70mm	TI-6085-06-070
75mm	TI-6085-06-075
80mm	TI-6085-06-080
85mm	TI-6085-06-085
90mm	TI-6085-06-090
95mm	TI-6085-06-095
100mm	TI-6085-06-100
105mm	TI-6085-06-105
110mm	TI-6085-06-110
115mm	TI-6085-06-115
120mm	TI-6085-06-120



End Caps for Ajax Cephalic Screws

Length	Code (Titanium)
0mm	TI-6085-06-00



Elastic Nailing System

Titanium Elastic Nail



Size					
$\varnothing 1.5\text{mm} \times 440\text{mm}$	$\varnothing 2.0\text{mm} \times 440\text{mm}$	$\varnothing 2.5\text{mm} \times 440\text{mm}$	$\varnothing 3.0\text{mm} \times 440\text{mm}$	$\varnothing 3.5\text{mm} \times 440\text{mm}$	$\varnothing 4.0\text{mm} \times 440\text{mm}$
Code					
412-1.5-044	412-2.0-044	412-2.5-044	412-3.0-044	412-3.5-044	412-4.0-044

End Cap for Titanium Elastic Nail

Size	
$\varnothing 3.0\text{mm}-4.0\text{mm}$	$\varnothing 1.5\text{mm}-2.5\text{mm}$
Code	
412E-1C	412E-2C



Retrograde Femur Nailing System

Retrograde Femur Nail

Ø Dia	Length	Titanium
10mm	180mm	TI-1458-10-180
10mm	200mm	TI-1458-10-200
10mm	300mm	TI-1458-10-300
10mm	320mm	TI-1458-10-320
10mm	340mm	TI-1458-10-340
10mm	360mm	TI-1458-10-360
11mm	180mm	TI-1458-11-180
11mm	200mm	TI-1458-11-200
11mm	300mm	TI-1458-11-300
11mm	320mm	TI-1458-11-320
11mm	340mm	TI-1458-11-340
11mm	360mm	TI-1458-11-360
12mm	180mm	TI-1458-12-180
12mm	200mm	TI-1458-12-200
12mm	300mm	TI-1458-12-300
12mm	320mm	TI-1458-12-320
12mm	340mm	TI-1458-12-340
12mm	360mm	TI-1458-12-360



End Cap For Retrograde Femur Nail

Titanium

TI-1458-01



5.0mm Locking Screw For Retrograde Femur Nail

Length	Titanium
32mm	TI-1458-032
34mm	TI-1458-034
36mm	TI-1458-036
38mm	TI-1458-038
40mm	TI-1458-040
42mm	TI-1458-042
44mm	TI-1458-044
46mm	TI-1458-046
48mm	TI-1458-048
50mm	TI-1458-050
52mm	TI-1458-052
54mm	TI-1458-054
56mm	TI-1458-056
58mm	TI-1458-058
60mm	TI-1458-060
62mm	TI-1458-062
64mm	TI-1458-064
66mm	TI-1458-066
68mm	TI-1458-068
70mm	TI-1458-070
72mm	TI-1458-072
74mm	TI-1458-074
76mm	TI-1458-076
78mm	TI-1458-078
80mm	TI-1458-080



Expert Femur Nailing System

Expert Femur Nail

		Titanium		
		(Left)	(Right)	Dia x Length
Ø9mm		TI-1459-9-320L	TI-1459-9-320R	Ø9mm x 320mm
		TI-1459-9-340L	TI-1459-9-340R	Ø9mm x 340mm
		TI-1459-9-360L	TI-1459-9-360R	Ø9mm x 360mm
		TI-1459-9-380L	TI-1459-9-380R	Ø9mm x 380mm
		TI-1459-9-400L	TI-1459-9-400R	Ø9mm x 400mm
		TI-1459-9-420L	TI-1459-9-420R	Ø9mm x 420mm
		TI-1459-9-440L	TI-1459-9-440R	Ø9mm x 440mm
Ø10mm		TI-1459-10-320L	TI-1459-10-320R	Ø10mm x 320mm
		TI-1459-10-340L	TI-1459-10-340R	Ø10mm x 340mm
		TI-1459-10-360L	TI-1459-10-360R	Ø10mm x 360mm
		TI-1459-10-380L	TI-1459-10-380R	Ø10mm x 380mm
		TI-1459-10-400L	TI-1459-10-400R	Ø10mm x 400mm
		TI-1459-10-420L	TI-1459-10-420R	Ø10mm x 420mm
		TI-1459-10-440L	TI-1459-10-440R	Ø10mm x 440mm
Ø11mm		TI-1459-11-320L	TI-1459-11-320R	Ø11mm x 320mm
		TI-1459-11-340L	TI-1459-11-340R	Ø11mm x 400mm
		TI-1459-11-360L	TI-1459-11-360R	Ø11mm x 360mm
		TI-1459-11-380L	TI-1459-11-380R	Ø11mm x 380mm
		TI-1459-11-400L	TI-1459-11-400R	Ø11mm x 400mm
		TI-1459-11-420L	TI-1459-11-420R	Ø11mm x 420mm
		TI-1459-11-440L	TI-1459-11-440R	Ø11mm x 440mm
Ø12mm		TI-1459-12-320L	TI-1459-12-320R	Ø12mm x 320mm
		TI-1459-12-340L	TI-1459-12-340R	Ø12mm x 340mm
		TI-1459-12-360L	TI-1459-12-360R	Ø12mm x 360mm
		TI-1459-12-380L	TI-1459-12-380R	Ø12mm x 380mm
		TI-1459-12-400L	TI-1459-12-400R	Ø12mm x 400mm
		TI-1459-12-420L	TI-1459-12-420R	Ø12mm x 420mm
		TI-1459-12-440L	TI-1459-12-440R	Ø12mm x 440mm
Ø13mm		TI-1459-13-320L	TI-1459-13-320R	Ø13mm x 320mm
		TI-1459-13-340L	TI-1459-13-340R	Ø13mm x 340mm
		TI-1459-13-360L	TI-1459-13-360R	Ø13mm x 360mm
		TI-1459-13-380L	TI-1459-13-380R	Ø13mm x 380mm
		TI-1459-13-400L	TI-1459-13-400R	Ø13mm x 400mm
		TI-1459-13-420L	TI-1459-13-420R	Ø13mm x 420mm
		TI-1459-13-440L	TI-1459-13-440R	Ø13mm x 440mm



End Caps For Expert Femur Nail



Titanium	Length
TI-1459-01	0mm
TI-1459-05	5mm
TI-1459-10	10mm
TI-1459-15	15mm
TI-1459-20	20mm

Ø4.8mm Locking Bolt, Self-Tapping, For Expert Femur Nail



Titanium	Length (mm)
TI-1458-4.8-025	25
TI-1458-4.8-026	26
TI-1458-4.8-028	28
TI-1458-4.8-030	30
TI-1458-4.8-032	32
TI-1458-4.8-034	34
TI-1458-4.8-036	36
TI-1458-4.8-038	38
TI-1458-4.8-040	40
TI-1458-4.8-042	42
TI-1458-4.8-044	44
TI-1458-4.8-046	46
TI-1458-4.8-048	48
TI-1458-4.8-050	50
TI-1458-4.8-052	52
TI-1458-4.8-054	54
TI-1458-4.8-056	56
TI-1458-4.8-058	58
TI-1458-4.8-060	60
TI-1458-4.8-062	62
TI-1458-4.8-064	64
TI-1458-4.8-066	66
TI-1458-4.8-068	68
TI-1458-4.8-070	70
TI-1458-4.8-072	72
TI-1458-4.8-074	74
TI-1458-4.8-076	76
TI-1458-4.8-078	78
TI-1458-4.8-080	80
TI-1458-4.8-082	82
TI-1458-4.8-084	84
TI-1458-4.8-085	85
TI-1458-4.8-090	90

Ø6.4mm Cannulated Anti-Rotation Screw, For Expert Femur Nail

Titanium	Length
TI-1459-060	60mm
TI-1459-065	65mm
TI-1459-070	70mm
TI-1459-075	75mm
TI-1459-080	80mm
TI-1459-085	85mm
TI-1459-090	90mm
TI-1459-095	95mm
TI-1459-100	100mm
TI-1459-105	105mm
TI-1459-110	110mm
TI-1459-115	115mm
TI-1459-120	120mm
TI-1459-125	125mm
TI-1459-130	130mm



Ga-mma Nailing System

130° Ga-mma Nail Type-II, SHORT

Ø Dia	Length (mm)	Titanium
9mm	180	TI-1457S-09-180
9mm	200	TI-1457S-09-200
9mm	220	TI-1457S-09-220
9mm	240	TI-1457S-09-240
10mm	180	TI-1457S-10-180
10mm	200	TI-1457S-10-200
10mm	220	TI-1457S-10-220
10mm	240	TI-1457S-10-240
11mm	180	TI-1457S-11-180
11mm	200	TI-1457S-11-200
11mm	220	TI-1457S-11-220
11mm	240	TI-1457S-11-240
12mm	180	TI-1457S-12-180
12mm	200	TI-1457S-12-200
12mm	220	TI-1457S-12-220
12mm	240	TI-1457S-12-240
13mm	180	TI-1457S-13-180
13mm	200	TI-1457S-13-200
13mm	220	TI-1457S-13-220
13mm	240	TI-1457S-13-240



130° Ga-mma Nail Type-II, LONG

Ø Dia	Length (mm)	Titanium (Left)	Titanium (Right)
9mm	320	TI-1457L-09-320L	TI-1457L-09-320R
9mm	340	TI-1457L-09-340L	TI-1457L-09-340R
9mm	360	TI-1457L-09-360L	TI-1457L-09-360R
9mm	380	TI-1457L-09-380L	TI-1457L-09-380R
9mm	400	TI-1457L-09-400L	TI-1457L-09-400R
9mm	420	TI-1457L-09-420L	TI-1457L-09-420R
9mm	440	TI-1457L-09-440L	TI-1457L-09-440R
10mm	320	TI-1457L-10-320L	TI-1457L-10-320R
10mm	340	TI-1457L-10-340L	TI-1457L-10-340R
10mm	360	TI-1457L-10-360L	TI-1457L-10-360R
10mm	380	TI-1457L-10-380L	TI-1457L-10-380R
10mm	400	TI-1457L-10-400L	TI-1457L-10-400R
10mm	420	TI-1457L-10-420L	TI-1457L-10-420R
10mm	440	TI-1457L-10-440L	TI-1457L-10-440R
11mm	320	TI-1457L-11-320L	TI-1457L-11-320R
11mm	340	TI-1457L-11-340L	TI-1457L-11-340R
11mm	360	TI-1457L-11-360L	TI-1457L-11-360R
11mm	380	TI-1457L-11-380L	TI-1457L-11-380R
11mm	400	TI-1457L-11-400L	TI-1457L-11-400R
11mm	420	TI-1457L-11-420L	TI-1457L-11-420R
11mm	440	TI-1457L-11-440L	TI-1457L-11-440R
12mm	320	TI-1457L-12-320L	TI-1457L-12-320R
12mm	340	TI-1457L-12-340L	TI-1457L-12-340R
12mm	360	TI-1457L-12-360L	TI-1457L-12-360R
12mm	380	TI-1457L-12-380L	TI-1457L-12-380R
12mm	400	TI-1457L-12-400L	TI-1457L-12-400R
12mm	420	TI-1457L-12-420L	TI-1457L-12-420R
12mm	440	TI-1457L-12-440L	TI-1457L-12-440R
13mm	320	TI-1457L-13-320L	TI-1457L-13-320R
13mm	340	TI-1457L-13-340L	TI-1457L-13-340R
13mm	360	TI-1457L-13-360L	TI-1457L-13-360R
13mm	380	TI-1457L-13-380L	TI-1457L-13-380R
13mm	400	TI-1457L-13-400L	TI-1457L-13-400R
13mm	420	TI-1457L-13-420L	TI-1457L-13-420R
13mm	440	TI-1457L-13-440L	TI-1457L-13-440R



End Cap For Ga-mma Nail Type-II



Length (mm)	Titanium
0	TI-1457-001E
5	TI-1457-005E
10	TI-1457-010E
15	TI-1457-015E

Inner Screw For Ga-mma Nail Type-II



Titanium

TI-1457-0S

Ø10.5mm Cephalic Screw, For Ga-mma Nail



Ø Dia	Length (mm)	Titanium
10.5mm	70	TI-600C-10.5-070
10.5mm	75	TI-600C-10.5-075
10.5mm	80	TI-600C-10.5-080
10.5mm	85	TI-600C-10.5-085
10.5mm	90	TI-600C-10.5-090
10.5mm	95	TI-600C-10.5-095
10.5mm	100	TI-600C-10.5-100
10.5mm	105	TI-600C-10.5-105
10.5mm	110	TI-600C-10.5-110
10.5mm	115	TI-600C-10.5-115
10.5mm	120	TI-600C-10.5-120

End Cap For Ø10.5mm Cephalic Screw For Ga-mma Nail

Titanium

TI-GM01.06



Ø6.4mm Cannulated Anti-Rotation Screw



Length (mm)	Titanium
60	TI-600A-6.4-060
65	TI-600A-6.4-065
70	TI-600A-6.4-070
75	TI-600A-6.4-075
80	TI-600A-6.4-080
85	TI-600A-6.4-085
90	TI-600A-6.4-090
95	TI-600A-6.4-095
100	TI-600A-6.4-100
105	TI-600A-6.4-105
110	TI-600A-6.4-110
115	TI-600A-6.4-115
120	TI-600A-6.4-120

Ø4.8mm Locking Bolt, For Gamma Nail

Length (mm)	Titanium
26	TI-600-026
28	TI-600-028
30	TI-600-030
32	TI-600-032
34	TI-600-034
36	TI-600-036
38	TI-600-038
40	TI-600-040
42	TI-600-042
44	TI-600-044
46	TI-600-046
48	TI-600-048
50	TI-600-050
52	TI-600-052
54	TI-600-054
56	TI-600-056
58	TI-600-058
60	TI-600-060
65	TI-600-065
70	TI-600-070
75	TI-600-075
80	TI-600-080
85	TI-600-085
90	TI-600-090



Humerus Nailing System

Intramedullary Cannulated Humerus Nail

Ø7mm	TI-6082-7.0-180	Ø7mm x 180mm
	TI-6082-7.0-200	Ø7mm x 200mm
	TI-6082-7.0-220	Ø7mm x 220mm
	TI-6082-7.0-240	Ø7mm x 240mm
	TI-6082-7.0-260	Ø7mm x 260mm
	TI-6082-7.0-280	Ø7mm x 280mm
	TI-6082-7.0-300	Ø7mm x 300mm
	TI-6082-7.0-320	Ø7mm x 320mm
Ø8mm	TI-6082-8.0-180	Ø8mm x 180mm
	TI-6082-8.0-200	Ø8mm x 200mm
	TI-6082-8.0-220	Ø8mm x 220mm
	TI-6082-8.0-240	Ø8mm x 240mm
	TI-6082-8.0-260	Ø8mm x 260mm
	TI-6082-8.0-280	Ø8mm x 280mm
	TI-6082-8.0-300	Ø8mm x 300mm
	TI-6082-8.0-320	Ø8mm x 320mm
Ø9mm	TI-6082-9.0-180	Ø9mm x 180mm
	TI-6082-9.0-200	Ø9mm x 200mm
	TI-6082-9.0-220	Ø9mm x 220mm
	TI-6082-9.0-240	Ø9mm x 240mm
	TI-6082-9.0-260	Ø9mm x 260mm
	TI-6082-9.0-280	Ø9mm x 280mm
	TI-6082-9.0-300	Ø9mm x 300mm
	TI-6082-9.0-320	Ø9mm x 320mm



End Cap For Intramedullary Humerus Nail

Titanium

TI-6083.100



Compression Screw For Intramedullary Humerus Nail

Titanium

TI-1219.000



4.5mm Locking Bolt For Intramedullary Humerus Nail

Length(mm)	Titanium
20	TI-6001.020
22	TI-6001.022
24	TI-6001.024
26	TI-6001.026
28	TI-6001.028
30	TI-6001.030
35	TI-6001.035
40	TI-6001.040
45	TI-6001.045
50	TI-6001.050
55	TI-6001.055
60	TI-6001.060
65	TI-6001.065
70	TI-6001.070



Ø4.5mm Proximal Screw

Length(mm)	Titanium
25	TI-1221.025
30	TI-1221.030
35	TI-1221.035
40	TI-1221.040
45	TI-1221.045
50	TI-1221.050
55	TI-1221.055
60	TI-1221.060
65	TI-1221.065
70	TI-1221.070



Reconstruction Cannulated Intramedullary Humerus Nail

Titanium	Dia x Length
TI-6092-6.0-150	Ø6mm x 150mm
TI-6092-7.0-150	Ø7mm x 150mm
TI-6092-8.0-150	Ø8mm x 150mm
TI-6092-9.0-150	Ø9mm x 150mm



Reconstruction Cannulated Intramedullary Humerus Nail

	Titanium	Dia x Length
Ø7mm	TI-6092-7.0-200	Ø7mm x 200mm
	TI-6092-7.0-220	Ø7mm x 220mm
	TI-6092-7.0-240	Ø7mm x 240mm
	TI-6092-7.0-260	Ø7mm x 260mm
	TI-6092-7.0-280	Ø7mm x 280mm
	TI-6092-7.0-300	Ø7mm x 300mm
	TI-6092-7.0-320	Ø7mm x 320mm
Ø8mm	TI-6092-8.0-200	Ø8mm x 200mm
	TI-6092-8.0-220	Ø8mm x 220mm
	TI-6092-8.0-240	Ø8mm x 240mm
	TI-6092-8.0-260	Ø8mm x 260mm
	TI-6092-8.0-280	Ø8mm x 280mm
	TI-6092-8.0-300	Ø8mm x 300mm
	TI-6092-8.0-320	Ø8mm x 320mm
Ø9mm	TI-6092-9.0-200	Ø9mm x 200mm
	TI-6092-9.0-220	Ø9mm x 220mm
	TI-6092-9.0-240	Ø9mm x 240mm
	TI-6092-9.0-260	Ø9mm x 260mm
	TI-6092-9.0-280	Ø9mm x 280mm
	TI-6092-9.0-300	Ø9mm x 300mm
	TI-6092-9.0-320	Ø9mm x 320mm



End Cap For Reconstruction Cannulated Intramedullary Nail

Titanium

TI-6084.00



Ø3.5mm Locking Bolt For Humerus Nail

Length(mm)	Titanium
20	TI-1222.020
22	TI-1222.022
24	TI-1222.024
26	TI-1222.026
28	TI-1222.028
30	TI-1222.030
35	TI-1222.035
40	TI-1222.040
45	TI-1222.045
50	TI-1222.050
55	TI-1222.055
60	TI-1222.060
65	TI-1222.065
70	TI-1222.070



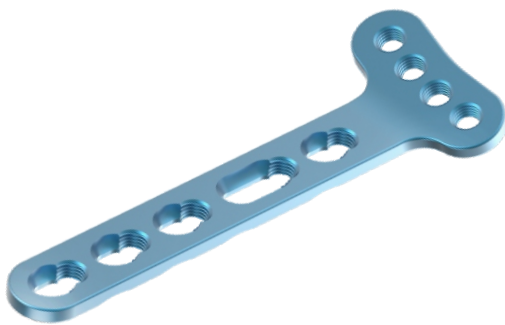
Wise-Lock Bone Plates

2.4mm Wise-Lock “T” Distal Radius Dorsal Plate, (3 Head Holes)



Holes	Titanium
3	TI-M08.03
4	TI-M08.04

2.4mm Wise-Lock Distal Radius Volar Plate, Extra-Articular, (4 Head Holes)



Holes	Left Direction	Right Direction
	Titanium	Titanium
3	TI-M14.03	TI-M15.03
5	TI-M14.05	TI-M15.05

2.7/3.5mm Wise-Lock Dorsolateral Distal Humerus Plate



2.7mm Round Locking Hole

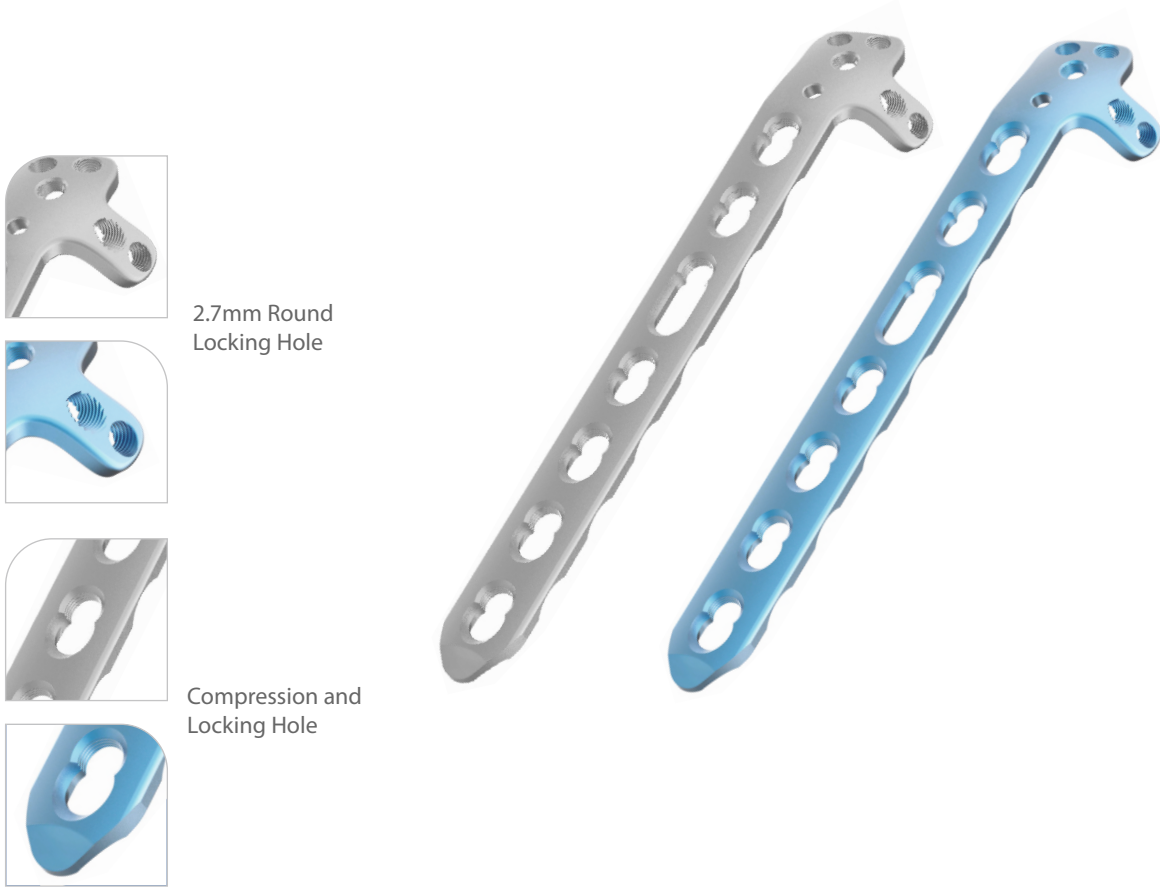


Compression and Locking Hole



Holes	Left Direction		Right Direction	
	Stainless Steel	Titanium	Stainless Steel	Titanium
3	742.103L	TI-742.103L	742.103R	TI-742.103R
5	742.105L	TI-742.105L	742.105R	TI-742.105R
7	742.107L	TI-742.107L	742.107R	TI-742.107R
9	742.109L	TI-742.109L	742.109R	TI-742.109R
14	742.114L	TI-742.114L	742.114R	TI-742.114R

2.7/3.5mm Wise-Lock Dorsolateral Distal Humerus Plate with Lateral Support

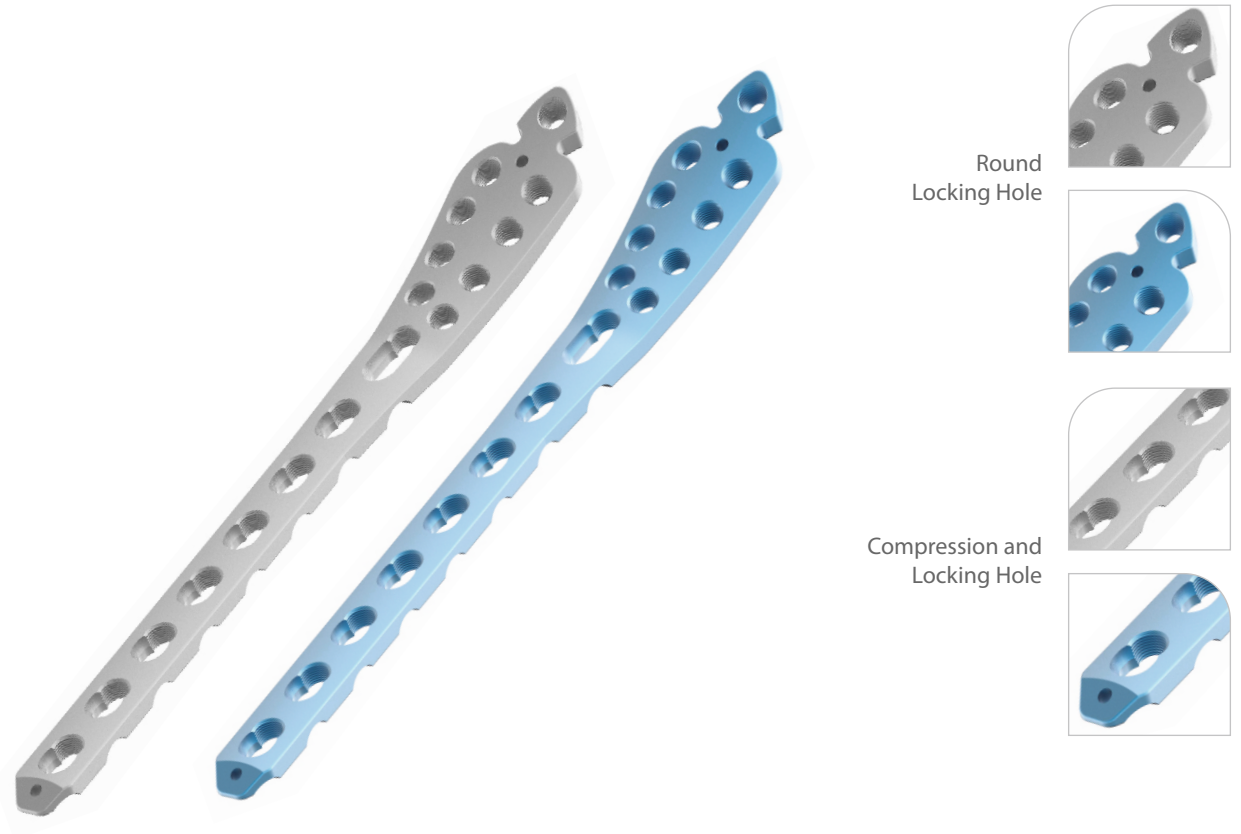


2.7mm Round Locking Hole

Compression and Locking Hole

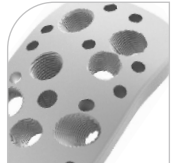
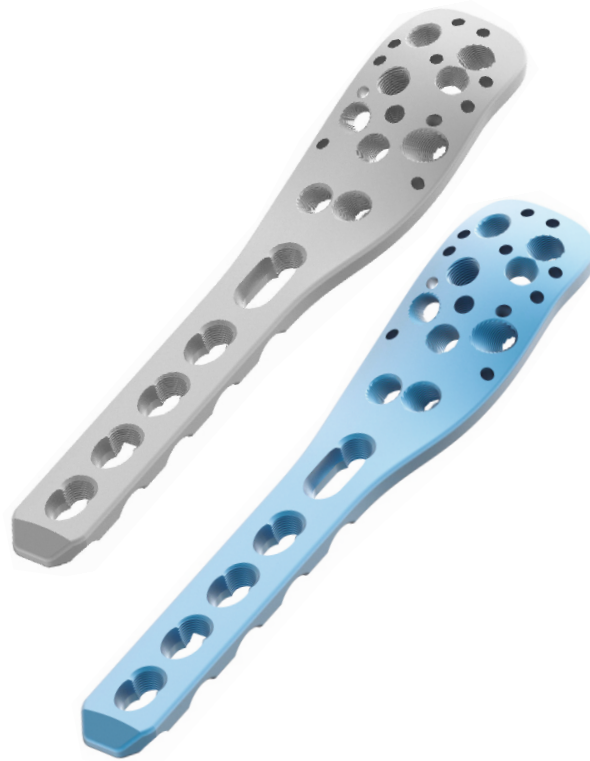
Holes	Left Direction		Right Direction	
	Stainless Steel	Titanium	Stainless Steel	Titanium
3	743.103L	TI-743.103L	743.103R	TI-743.103R
5	743.105L	TI-743.105L	743.105R	TI-743.105R
7	743.107L	TI-743.107L	743.107R	TI-743.107R
9	743.109L	TI-743.109L	743.109R	TI-743.109R
14	743.114L	TI-743.114L	743.114R	TI-743.114R

3.5mm Wise-Lock Medial Distal Tibia Plate

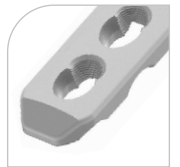
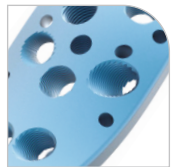


Holes	Left Direction		Right Direction	
	Stainless Steel	Titanium	Stainless Steel	Titanium
4	746.104L	TI-746.104L	746.104R	TI-746.104R
6	746.106L	TI-746.106L	746.106R	TI-746.106R
8	746.108L	TI-746.108L	746.108R	TI-746.108R
10	746.110L	TI-746.110L	746.110R	TI-746.110R
12	746.112L	TI-746.112L	746.112R	TI-746.112R
14	746.114L	TI-746.114L	746.114R	TI-746.114R

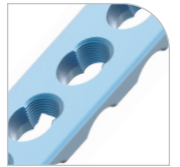
PHEELOS - 3.5mm Wise-Lock Proximal Humerus Plate, Short



Round Locking Hole

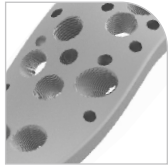


Compression and Locking Hole

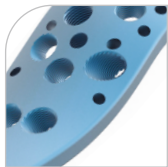


Holes	Stainless Steel	Titanium
3	745.503	TI-745.503
4	745.504	TI-745.504
5	745.505	TI-745.505

PHEELOS - 3.5mm Wise-Lock Proximal Humerus Plate, Long



Round Locking Hole

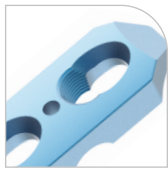


Compression and Locking Hole

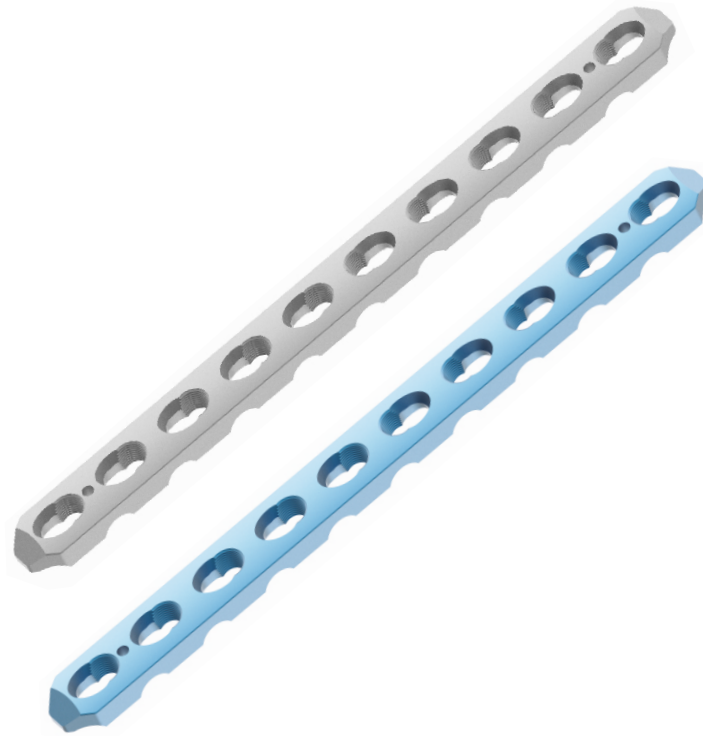
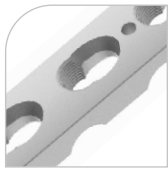


Holes	Stainless Steel	Titanium
5	745.605	TI-745.605
6	745.606	TI-745.606
8	745.608	TI-745.608
10	745.610	TI-745.610
12	745.612	TI-745.612

3.5mm Wise-Lock Small Dynamic Compression Plate with LC under cuts



Compression and Locking Hole



Holes	Stainless Steel	Titanium
5	721.205	TI-721.205
6	721.206	TI-721.206
7	721.207	TI-721.207
8	721.208	TI-721.208
9	721.209	TI-721.209
10	721.210	TI-721.210
11	721.211	TI-721.211
12	721.212	TI-721.212

3.5mm Wise-Lock Proximal Humerus Plate



Round Locking Hole

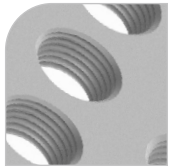


Compression and Locking Hole

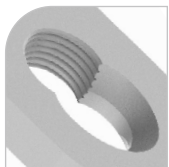


Holes	Stainless Steel	Titanium
5	745.105	TI-745.105
6	745.106	TI-745.106
7	745.107	TI-745.107
8	745.108	TI-745.108

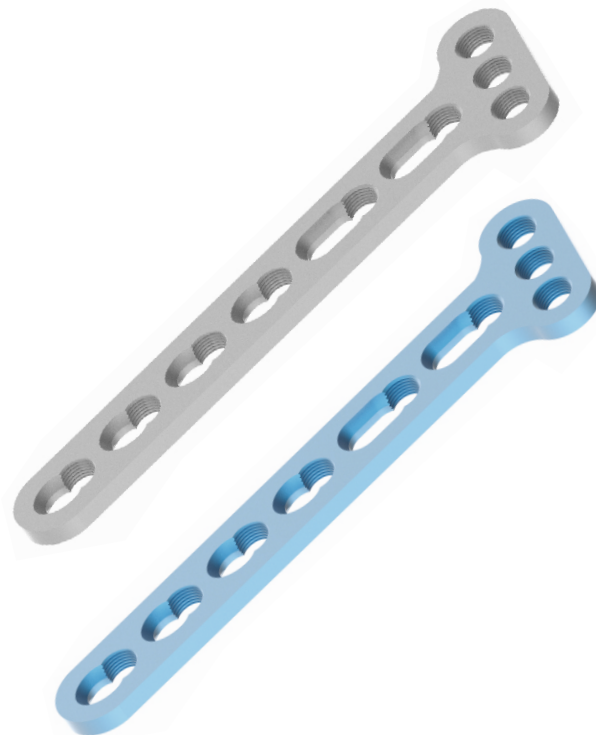
3.5mm Wise-Lock Small "T" Plate, Oblique Angled



Round Locking Hole

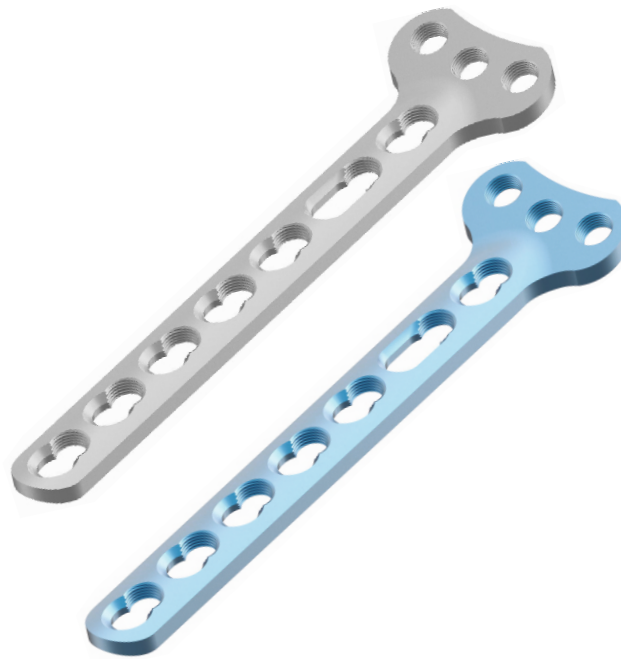


Compression and Locking Hole



Holes	Left Direction		Right Direction	
	Stainless Steel	Titanium	Stainless Steel	Titanium
3	712.103L	TI-712.103L	712.103R	TI-712.103R
4	712.104L	TI-712.104L	712.104R	TI-712.104R
5	712.105L	TI-712.105L	712.105R	TI-712.105R
6	712.106L	TI-712.106L	712.106R	TI-712.106R

3.5mm Wise-Lock Small "T" Plate, Right Angled (3 Head Holes)



Round Locking Hole



Compression and Locking Hole



Holes	Stainless Steel	Titanium
3	709.103	TI-709.103
4	709.104	TI-709.104
5	709.105	TI-709.105
6	709.106	TI-709.106

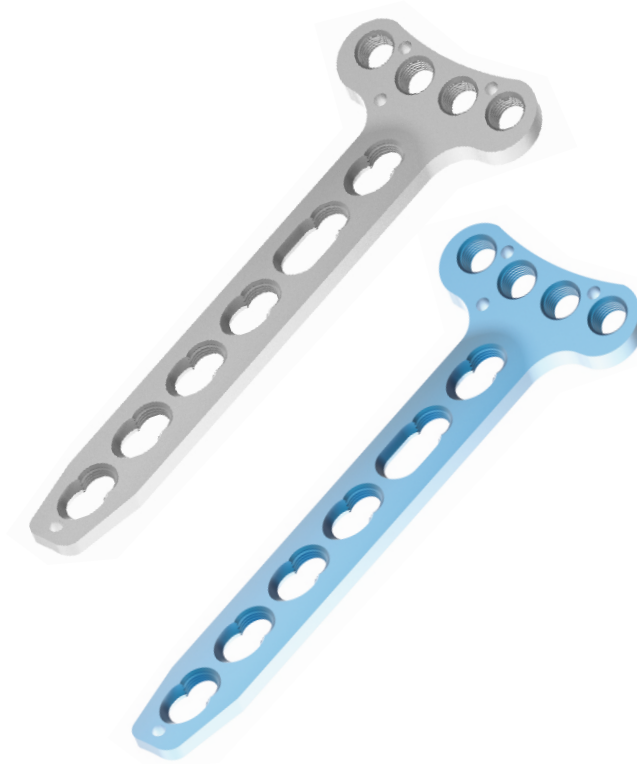
3.5mm Wise-Lock Small "T" Plate, Right Angled, (4 Head Holes)



Round Locking Hole

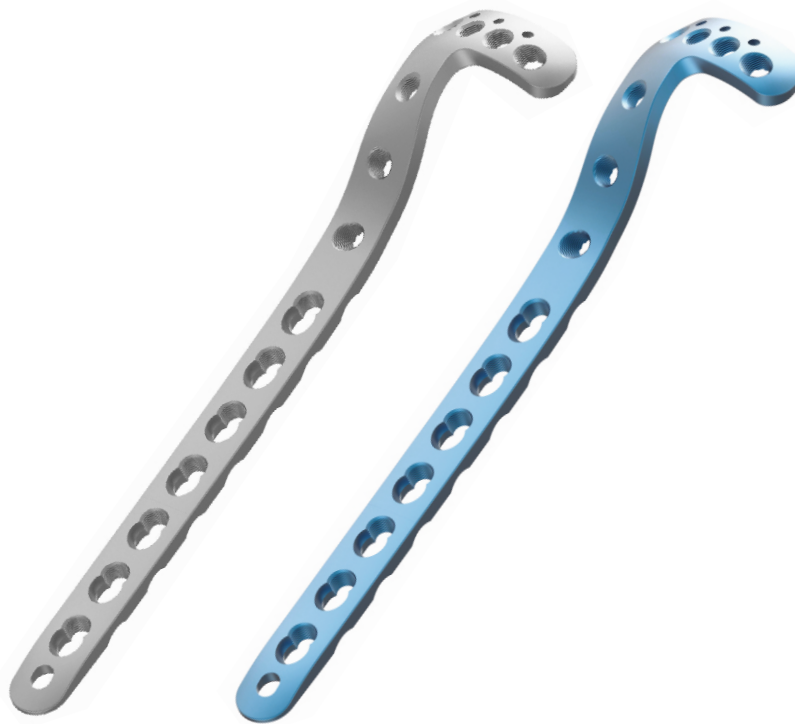


Compression and Locking Hole

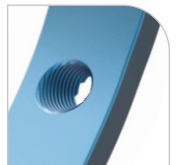


Holes	Stainless Steel	Titanium
3	710.203	TI-710.203
4	710.204	TI-710.204
5	710.205	TI-710.205
6	710.206	TI-710.206

3.5mm Wise-Lock Proximal Tibia Plate



Round Locking Hole



Compression and Locking Hole



Holes	Left Direction		Right Direction	
	Stainless Steel	Titanium	Stainless Steel	Titanium
4	747.104L	TI-747.104L	747.104R	TI-747.104R
6	747.106L	TI-747.106L	747.106R	TI-747.106R
8	747.108L	TI-747.108L	747.108R	TI-747.108R
10	747.110L	TI-747.110L	747.110R	TI-747.110R
12	747.112L	TI-747.112L	747.112R	TI-747.112R
14	747.114L	TI-747.114L	747.114R	TI-747.114R
16	747.116L	TI-747.116L	747.116R	TI-747.116R

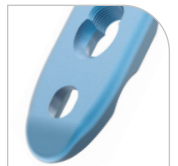
3.5mm Wise-Lock Anterolateral Distal Tibia Plate



Round Locking Hole



Compression and Locking Hole

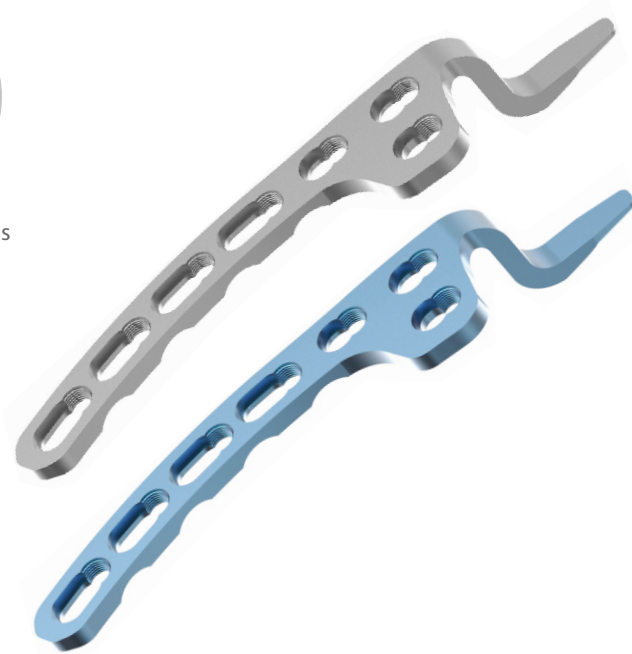


Holes	Left Direction		Right Direction	
	Stainless Steel	Titanium	Stainless Steel	Titanium
5	WS1.05	TI-WS1.05	WS2.05	TI-WS2.05
7	WS1.07	TI-WS1.07	WS2.07	TI-WS2.07
9	WS1.09	TI-WS1.09	WS2.09	TI-WS2.09
11	WS1.11	TI-WS1.11	WS2.11	TI-WS2.11
13	WS1.13	TI-WS1.13	WS2.13	TI-WS2.13
15	WS1.15	TI-WS1.15	WS2.15	TI-WS2.15
17	WS1.17	TI-WS1.17	WS2.17	TI-WS2.17
19	WS1.19	TI-WS1.19	WS2.19	TI-WS2.19
21	WS1.21	TI-WS1.21	WS2.21	TI-WS2.21

3.5mm Wise-Lock Clavicle Hook Plate



3 different hook depths
12, 15 and 18 mm

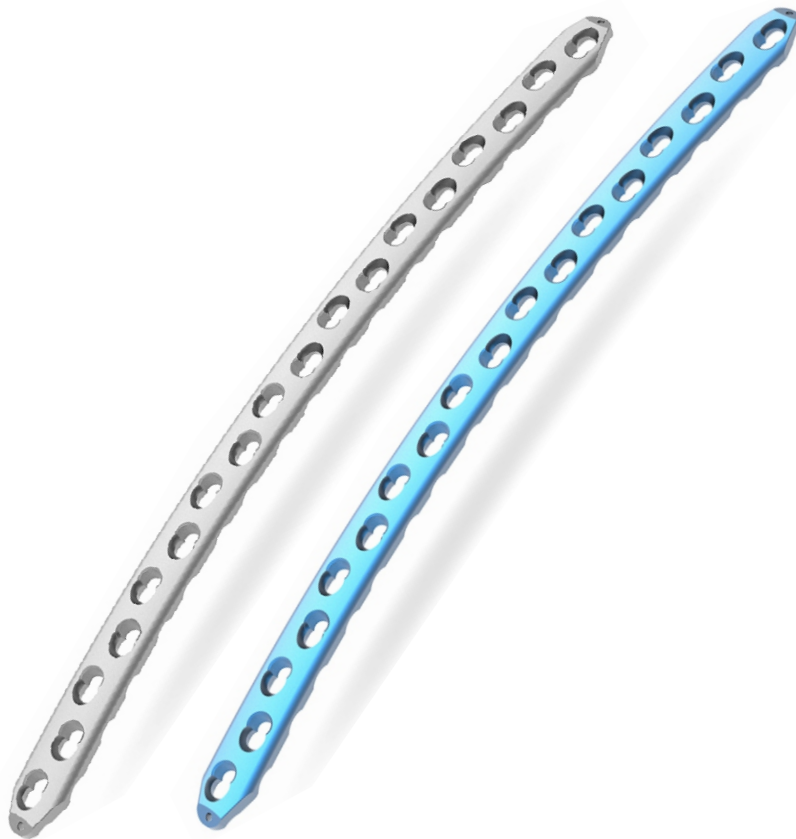


Compression and
Locking Hole



Holes	Hook Depth	Left Direction		Right Direction	
		Stainless Steel	Titanium	Stainless Steel	Titanium
4	12mm	752.4.12L	TI-752.4.12L	752.4.12R	TI-752.4.12R
4	15mm	752.4.15L	TI-752.4.15L	752.4.15R	TI-752.4.15R
4	18mm	752.4.18L	TI-752.4.18L	752.4.18R	TI-752.4.18R
5	12mm	752.5.12L	TI-752.5.12L	752.5.12R	TI-752.5.12R
5	15mm	752.5.15L	TI-752.5.15L	752.5.15R	TI-752.5.15R
5	18mm	752.5.18L	TI-752.5.18L	752.5.18R	TI-752.5.18R
6	12mm	752.6.12L	TI-752.6.12L	752.6.12R	TI-752.6.12R
6	15mm	752.6.15L	TI-752.6.15L	752.6.15R	TI-752.6.15R
6	18mm	752.6.18L	TI-752.6.18L	752.6.18R	TI-752.6.18R
7	12mm	752.7.12L	TI-752.7.12L	752.7.12R	TI-752.7.12R
7	15mm	752.7.15L	TI-752.7.15L	752.7.15R	TI-752.7.15R
7	18mm	752.7.18L	TI-752.7.18L	752.7.18R	TI-752.7.18R

4.5/5.0mm Wise-Lock Curved Broad Plate



Compression and Locking Hole



Holes	Stainless Steel	Titanium
12	750.112	TI-750.112
13	750.113	TI-750.113
14	750.114	TI-750.114
15	750.115	TI-750.115
16	750.116	TI-750.116
17	750.117	TI-750.117
18	750.118	TI-750.118

4.5/5.0mm Wise-Lock Reconstruction Plate



Compression and Locking Hole



Holes	Stainless Steel	Titanium
3	728.203	TI-728.203
4	728.204	TI-728.204
5	728.205	TI-728.205
6	728.206	TI-728.206
7	728.207	TI-728.207
8	728.208	TI-728.208
9	728.209	TI-728.209
10	728.210	TI-728.210
11	728.211	TI-728.211
12	728.212	TI-728.212
13	728.213	TI-728.213
14	728.214	TI-728.214
15	728.215	TI-728.215
16	728.216	TI-728.216

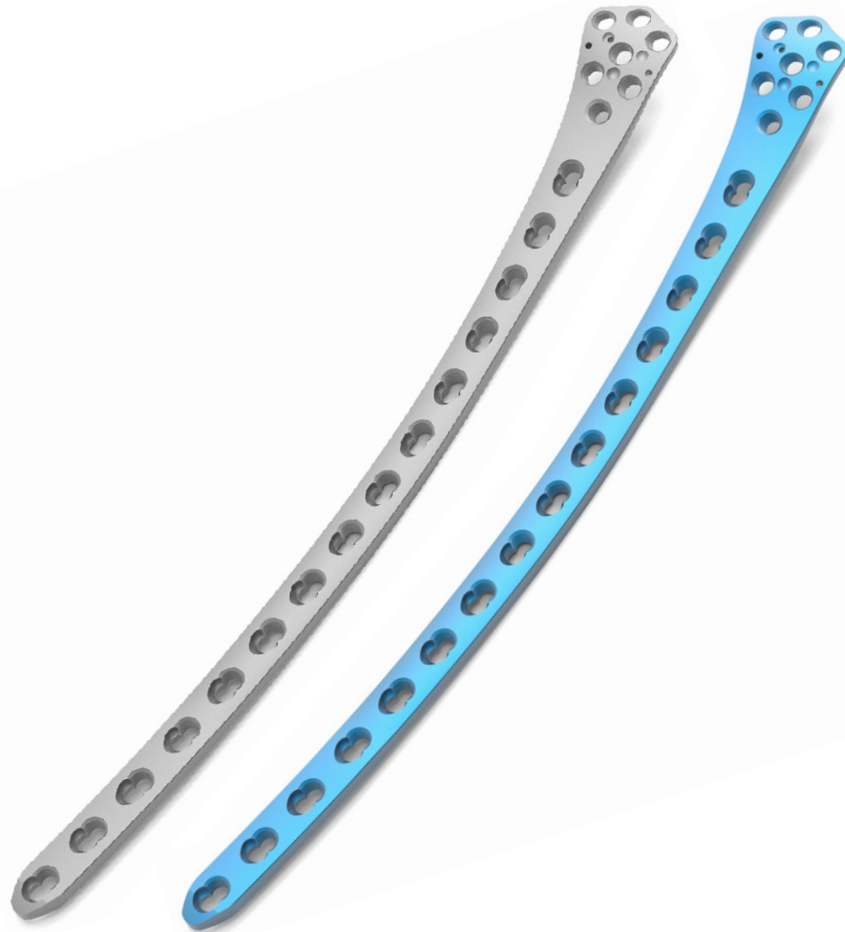
4.5/5.0mm Wise-Lock Distal Femur Plate



Round Locking Hole



Compression and Locking Hole

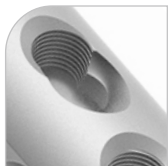
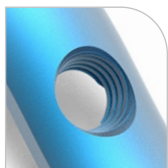


Holes	Left Direction		Right Direction	
	Stainless Steel	Titanium	Stainless Steel	Titanium
5	748.105L	TI-748.105L	748.105R	TI-748.105R
7	748.107L	TI-748.107L	748.107R	TI-748.107R
9	748.109L	TI-748.109L	748.109R	TI-748.109R
11	748.111L	TI-748.111L	748.111R	TI-748.111R
13	748.113L	TI-748.113L	748.113R	TI-748.113R
15	748.115L	TI-748.115L	748.115R	TI-748.115R

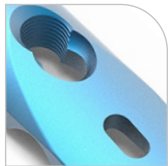
4.5/5.0mm Wise-Lock Proximal Femur Plate



Round Locking Hole

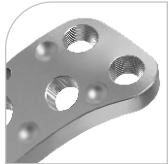


Compression and Locking Hole

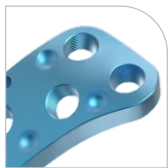


Holes	Left Direction		Right Direction	
	Stainless Steel	Titanium	Stainless Steel	Titanium
2	798.002L	TI-798.002L	798.002R	TI-7798.002R
3	798.003L	TI-798.003L	798.003R	TI-798.003R
4	798.004L	TI-798.004L	798.004R	TI-798.004R
6	798.006L	TI-798.006L	798.006R	TI-798.006R
8	798.008L	TI-798.008L	798.008R	TI-798.008R
10	798.010L	TI-798.010L	798.010R	TI-798.010R
12	798.012L	TI-798.012L	798.012R	TI-798.012R
14	798.014L	TI-798.014L	798.014R	TI-798.014R
16	798.016L	TI-798.016L	798.016R	TI-798.016R

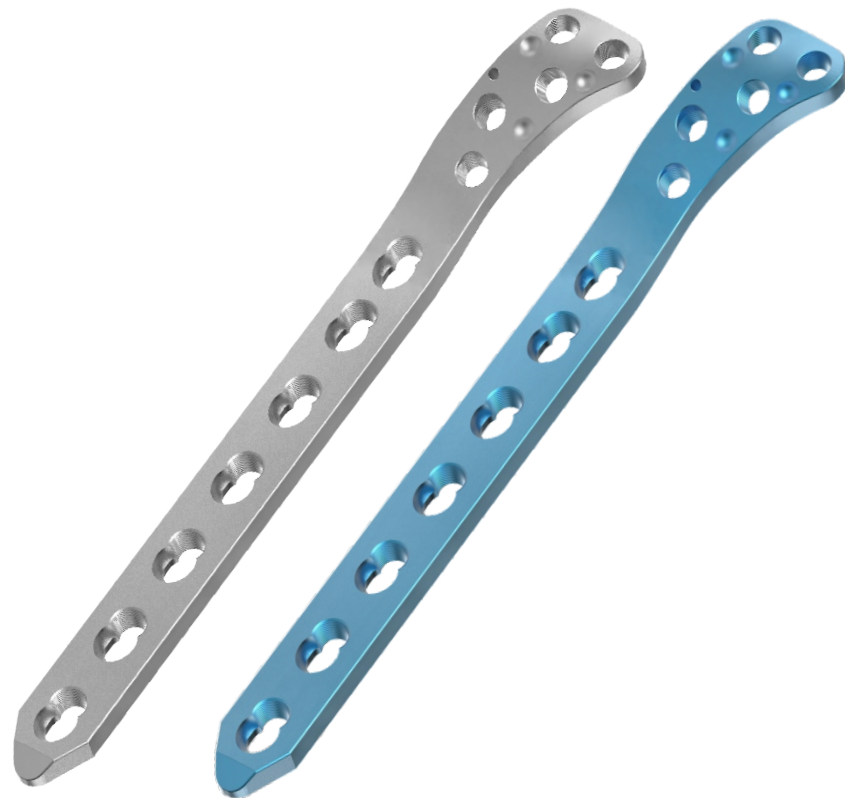
4.5/5.0mm Wise-Lock Proximal Lateral Tibia Plate



Round Locking Hole



Compression and Locking Hole

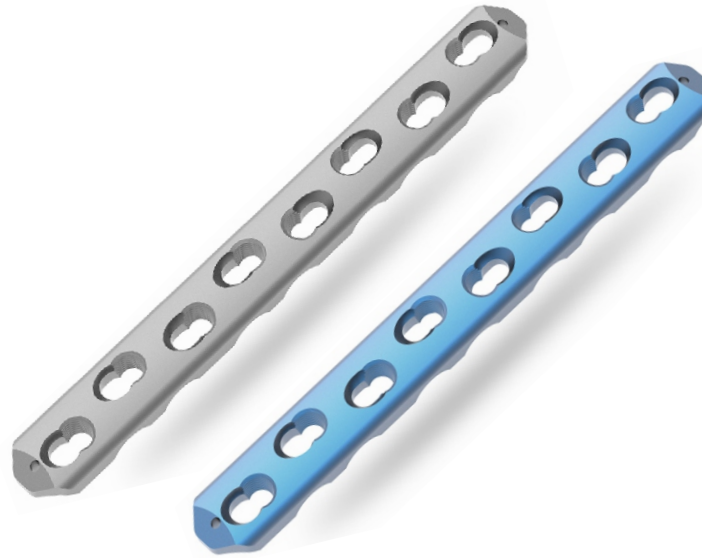


Holes	Left Direction		Right Direction	
	Stainless Steel	Titanium	Stainless Steel	Titanium
5	733.205L	TI-733.205L	733.205R	TI-733.205R
7	733.207L	TI-733.207L	733.207R	TI-733.207R
9	733.209L	TI-733.209L	733.209R	TI-733.209R
11	733.211L	TI-733.211L	733.211R	TI-733.211R
13	733.213L	TI-733.213L	733.213R	TI-733.213R

4.5/5.0mm Wise-Lock Broad Dynamic Compression Plate with LC under cuts

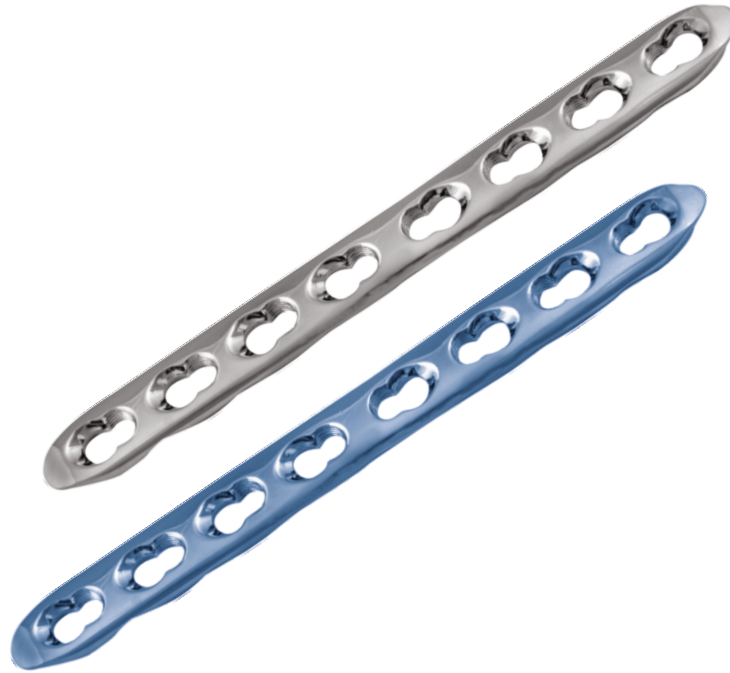


Compression and Locking Hole

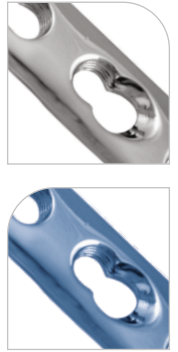


Holes	Stainless Steel	Titanium
5	725.205	TI-725.205
6	725.206	TI-725.206
7	725.207	TI-725.207
8	725.208	TI-725.208
9	725.209	TI-725.209
10	725.210	TI-725.210
11	725.211	TI-725.211
12	725.212	TI-725.212
13	725.213	TI-725.213
14	725.214	TI-725.214
15	725.215	TI-725.215
16	725.216	TI-725.216
18	725.218	TI-725.218
20	725.220	TI-725.220
22	725.222	TI-725.222
24	725.224	TI-725.224

4.5/5.0mm Wise-Lock Narrow Dynamic Compression Plate with LC under cuts



Compression and Locking Hole



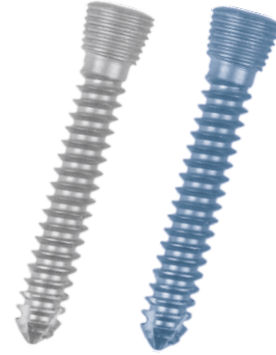
Holes	Stainless Steel	Titanium
2	723.202	TI-723.202
3	723.203	TI-723.203
4	723.204	TI-723.204
5	723.205	TI-723.205
6	723.206	TI-723.206
7	723.207	TI-723.207
8	723.208	TI-723.208
9	723.209	TI-723.209
10	723.210	TI-723.210
11	723.211	TI-723.211
12	723.212	TI-723.212
14	723.214	TI-723.214
16	723.216	TI-723.216
18	723.218	TI-723.218
20	723.220	TI-723.220
22	723.222	TI-723.222
24	723.224	TI-723.224

**2.4mm Wise-Lock Screw, Self-Tapping,
(Hex Head)**



Length (mm)	Titanium
6	TI-M17.06
8	TI-M17.08
10	TI-M17.10
12	TI-M17.12
14	TI-M17.14
16	TI-M17.16
18	TI-M17.18
20	TI-M17.20
22	TI-M17.22
24	TI-M17.24
26	TI-M17.26
28	TI-M17.28
30	TI-M17.30

**2.7mm Wise-Lock Screw, Self-Tapping
(Hex Head)**



Length (mm)	Stainless Steel	Titanium
10	118.010	TI-118.010
12	118.012	TI-118.012
14	118.014	TI-118.014
16	118.016	TI-118.016
18	118.018	TI-118.018
20	118.020	TI-118.020
22	118.022	TI-118.022
24	118.024	TI-118.024
26	118.026	TI-118.026
28	118.028	TI-118.028
30	118.030	TI-118.030
32	118.032	TI-118.032
34	118.034	TI-118.034
36	118.036	TI-118.036
38	118.038	TI-118.038
40	118.040	TI-118.040
42	118.042	TI-118.042
44	118.044	TI-118.044
46	118.046	TI-118.046
48	118.048	TI-118.048
50	118.050	TI-118.050
52	118.052	TI-118.052
54	118.054	TI-118.054
56	118.056	TI-118.056
58	118.058	TI-118.058
60	118.060	TI-118.060

3.5mm Wise-Lock Screw, Self-Tapping (Hex Head)

Length (mm)	Stainless Steel	Titanium
10	117.010	TI-117.010
12	117.012	TI-117.012
14	117.014	TI-117.014
16	117.016	TI-117.016
18	117.018	TI-117.018
20	117.020	TI-117.020
22	117.022	TI-117.022
24	117.024	TI-117.024
26	117.026	TI-117.026
28	117.028	TI-117.028
30	117.030	TI-117.030
32	117.032	TI-117.032
34	117.034	TI-117.034
35	117.035	TI-117.035
36	117.036	TI-117.036
38	117.038	TI-117.038
40	117.040	TI-117.040
42	117.042	TI-117.042
44	117.044	TI-117.044
45	117.045	TI-117.045
46	117.046	TI-117.046
48	117.048	TI-117.048
50	117.050	TI-117.050
52	117.052	TI-117.052
54	117.054	TI-117.054
55	117.055	TI-117.055
56	117.056	TI-117.056
58	117.058	TI-117.058
60	117.060	TI-117.060
65	117.065	TI-117.065
70	117.070	TI-117.070
75	117.075	TI-117.075
80	117.080	TI-117.080



3.5mm Wise-Lock Screw, Self-Drilling (Hex Head)

Length (mm)	Stainless Steel	Titanium
10	117.210	TI-117.210
12	117.212	TI-117.212
14	117.214	TI-117.214
16	117.216	TI-117.216
18	117.218	TI-117.218
20	117.220	TI-117.220
22	117.222	TI-117.222
24	117.224	TI-117.224
26	117.226	TI-117.226
28	117.228	TI-117.228
30	117.230	TI-117.230
32	117.232	TI-117.232
34	117.234	TI-117.234
36	117.236	TI-117.236
38	117.238	TI-117.238
40	117.240	TI-117.240
42	117.242	TI-117.242
44	117.244	TI-117.244
46	117.246	TI-117.246
48	117.248	TI-117.248
50	117.250	TI-117.250
52	117.252	TI-117.252
54	117.254	TI-117.254
56	117.256	TI-117.256
58	117.258	TI-117.258
60	117.260	TI-117.260



5.0mm Wise-Lock Screw, Self-Tapping, (Hex Head)

Length (mm)	Stainless Steel	Titanium
12	119.012	TI-119.012
14	119.014	TI-119.014
16	119.016	TI-119.016
18	119.018	TI-119.018
20	119.020	TI-119.020
22	119.022	TI-119.022
24	119.024	TI-119.024
26	119.026	TI-119.026
28	119.028	TI-119.028
30	119.030	TI-119.030
32	119.032	TI-119.032
34	119.034	TI-119.034
36	119.036	TI-119.036
38	119.038	TI-119.038
40	119.040	TI-119.040
42	119.042	TI-119.042
44	119.044	TI-119.044
46	119.046	TI-119.046
48	119.048	TI-119.048
50	119.050	TI-119.050
52	119.052	TI-119.052
54	119.054	TI-119.054
56	119.056	TI-119.056
58	119.058	TI-119.058
60	119.060	TI-119.060
65	119.065	TI-119.065
70	119.070	TI-119.070
75	119.075	TI-119.075
80	119.080	TI-119.080
85	119.085	TI-119.085
90	119.090	TI-119.090







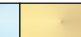

5.0mm Wise-Lock Screw, Self-Tapping & Self-Drilling, (Hex Head)

Length (mm)	Stainless Steel	Titanium
12	119.212	TI-119.212
14	119.214	TI-119.214
16	119.216	TI-119.216
18	119.218	TI-119.218
20	119.220	TI-119.220
22	119.222	TI-119.222
24	119.224	TI-119.224
26	119.226	TI-119.226
28	119.228	TI-119.228
30	119.230	TI-119.230
32	119.232	TI-119.232
34	119.234	TI-119.234
36	119.236	TI-119.236
38	119.238	TI-119.238
40	119.240	TI-119.240
42	119.242	TI-119.242
44	119.244	TI-119.244
46	119.246	TI-119.246
48	119.248	TI-119.248
50	119.250	TI-119.250
55	119.255	TI-119.255
60	119.260	TI-119.260
65	119.265	TI-119.265
70	119.270	TI-119.270
75	119.275	TI-119.275
80	119.280	TI-119.280
85	119.285	TI-119.285
90	119.290	TI-119.290



Vertaux 5.5 mm Pedicle Screw System

Colour Parameters as per Ø

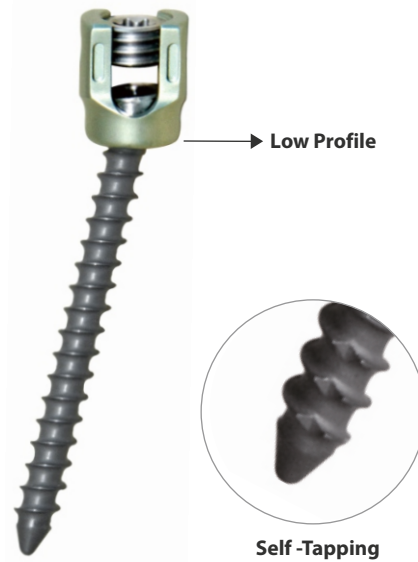
					
Pink Ø 4.5	Silver Ø 5.0	Green Ø 5.5	Blue Ø 6.0	Golden Ø 6.5	Brown Ø 7.0

VERTAUX - Monoaxial Pedicle Screw with Cap



Code	Dia X Length
SP-1634	Ø4.5mm x 25mm
SP-924	Ø4.5mm x 30mm
SP-207	Ø4.5mm x 35mm
SP-208	Ø4.5mm x 40mm
SP-925	Ø4.5mm x 45mm
SP-903	Ø4.5mm x 50mm
SP-1637	Ø5.0mm x 25mm
SP-927	Ø5.0mm x 30mm
SP-209	Ø5.0mm x 35mm
SP-210	Ø5.0mm x 40mm
SP-211	Ø5.0mm x 45mm
SP-928	Ø5.0mm x 50mm
SP-904	Ø5.0mm x 55mm
SP-1641	Ø5.5mm x 25mm
SP-929	Ø5.5mm x 30mm
SP-212	Ø5.5mm x 35mm
SP-213	Ø5.5mm x 40mm
SP-214	Ø5.5mm x 45mm
SP-215	Ø5.5mm x 50mm
SP-930	Ø5.5mm x 55mm

Code	Dia X Length
SP-1645	Ø6.0mm x 25mm
SP-931	Ø6.0mm x 30mm
SP-216	Ø6.0mm x 35mm
SP-217	Ø6.0mm x 40mm
SP-218	Ø6.0mm x 45mm
SP-219	Ø6.0mm x 50mm
SP-220	Ø6.0mm x 55mm
SP-1649	Ø6.5mm x 25mm
SP-932	Ø6.5mm x 30mm
SP-221	Ø6.5mm x 35mm
SP-222	Ø6.5mm x 40mm
SP-223	Ø6.5mm x 45mm
SP-224	Ø6.5mm x 50mm
SP-225	Ø6.5mm x 55mm
SP-1661	Ø7.0mm x 25mm
SP-934	Ø7.0mm x 30mm
SP-227	Ø7.0mm x 40mm
SP-228	Ø7.0mm x 45mm
SP-229	Ø7.0mm x 50mm
SP-230	Ø7.0mm x 55mm

VERTAUX - Polyaxial Pedicle Screw with Cap


Code	Dia X Length
SP-472	Ø4.5mm x 25mm
SP-935	Ø4.5mm x 30mm
SP-231	Ø4.5mm x 35mm
SP-232	Ø4.5mm x 40mm
SP-936	Ø4.5mm x 45mm
SP-937	Ø4.5mm x 50mm
SP-1638	Ø5.0mm x 25mm
SP-938	Ø5.0mm x 30mm
SP-233	Ø5.0mm x 35mm
SP-234	Ø5.0mm x 40mm
SP-235	Ø5.0mm x 45mm
SP-939	Ø5.0mm x 50mm
SP-940	Ø5.0mm x 55mm
SP-1642	Ø5.5mm x 25mm
SP-941	Ø5.5mm x 30mm
SP-236	Ø5.5mm x 35mm
SP-237	Ø5.5mm x 40mm
SP-238	Ø5.5mm x 45mm
SP-239	Ø5.5mm x 50mm
SP-942	Ø5.5mm x 55mm

Code	Dia X Length
SP-1646	Ø6.0mm x 25mm
SP-943	Ø6.0mm x 30mm
SP-240	Ø6.0mm x 35mm
SP-241	Ø6.0mm x 40mm
SP-242	Ø6.0mm x 45mm
SP-243	Ø6.0mm x 50mm
SP-244	Ø6.0mm x 55mm
SP-1650	Ø6.5mm x 25mm
SP-944	Ø6.5mm x 30mm
SP-245	Ø6.5mm x 35mm
SP-246	Ø6.5mm x 40mm
SP-247	Ø6.5mm x 45mm
SP-248	Ø6.5mm x 50mm
SP-249	Ø6.5mm x 55mm
SP-1662	Ø7.0mm x 25mm
SP-945	Ø7.0mm x 30mm
SP-250	Ø7.0mm x 35mm
SP-251	Ø7.0mm x 40mm
SP-252	Ø7.0mm x 45mm
SP-253	Ø7.0mm x 50mm
SP-254	Ø7.0mm x 55mm

VERTAUX - Pedicle Screw Cap, M9

Code	Product Specification
SP-303	M9



VERTAUX - Cross Link- I

Code	Length
SP-321	50
SP-322	55
SP-323	65



VERTAUX - Cross Link- II

Code	Length
SP-304	40mm
SP-305	45mm
SP-306	50mm
SP-307	55mm
SP-308	60mm
SP-309	65mm
SP-310	70mm
SP-311	75mm
SP-312	80mm
SP-313	85mm
SP-314	90mm
SP-319	95mm
SP-315	100mm
SP-316	105mm
SP-317	110mm
SP-318	115mm
SP-320	120mm



VERTAUX - Rod

Code	Length
SP-324	Ø5.5mm x 50mm
SP-325	Ø5.5mm x 60mm
SP-326	Ø5.5mm x 70mm
SP-327	Ø5.5mm x 80mm
SP-328	Ø5.5mm x 90mm
SP-329	Ø5.5mm x 100mm
SP-330	Ø5.5mm x 110mm
SP-331	Ø5.5mm x 120mm
SP-332	Ø5.5mm x 130mm
SP-333	Ø5.5mm x 140mm
SP-334	Ø5.5mm x 150mm
SP-335	Ø5.5mm x 160mm
SP-336	Ø5.5mm x 170mm
SP-337	Ø5.5mm x 180mm
SP-338	Ø5.5mm x 200mm
SP-339	Ø5.5mm x 220mm
SP-340	Ø5.5mm x 240mm
SP-341	Ø5.5mm x 250mm
SP-342	Ø5.5mm x 260mm
SP-343	Ø5.5mm x 280mm
SP-344	Ø5.5mm x 300mm
SP-345	Ø5.5mm x 350mm
SP-346	Ø5.5mm x 400mm
SP-347	Ø5.5mm x 450mm
SP-348	Ø5.5mm x 500mm





USA

Auxein Inc.
1500 Nw 89th Court, Suite 205,
Doral, Florida 33172
Tel: +1 305 395 6062
E Fax: +1 305 395 6262
Email: USoffice@auxein.com

MEXICO

Auxein México, S.A. de C.V.
Tepic 139 int 801, Colonia Roma Sur,
Alcaldía Cuauhtémoc, CDMX,
México, C.P. 06760
Tel: +521 55 7261 0318
Email: info@auxein.mx

INDIA

Auxein Medical Pvt. Ltd.
Plot No. 168-169-170, Phase-4,
Kundli Industrial Area,
HSIIDC, Sector-57, Sonapat - 131028, Haryana
Tel: +91 99106 43638 | Fax: +91 86077 70197
Email: info@auxein.com