



LIGAMED[®]
— MEDICAL —

**BIOMECH
IMPLANT & INSTRUMENT SETS
REFERENCE NUMBER LIST**

Cervical Cage & Prosthesis System

- Cervical PEEK Cage



Product Name	Reference Number	Product Name	Reference Number
BIOMECH CERVICAL INTERBODY CAGE, RIGID, PEEK 4,0X14X12 MM	1000.0401412	BIOMECH CERVICAL INTERBODY CAGE, RIGID, PEEK 7,0X16X14 MM	1000.0701614
BIOMECH CERVICAL INTERBODY CAGE, RIGID, PEEK 4,0X16X14 MM	1000.0401614	BIOMECH CERVICAL INTERBODY CAGE, RIGID, PEEK 8,0X14X12 MM	1000.0801412
BIOMECH CERVICAL INTERBODY CAGE, RIGID, PEEK 5,0X14X12 MM	1000.0501412	BIOMECH CERVICAL INTERBODY CAGE, RIGID, PEEK 8,0X16X14 MM	1000.0801614
BIOMECH CERVICAL INTERBODY CAGE, RIGID, PEEK 5,0X16X14 MM	1000.0501614	BIOMECH CERVICAL INTERBODY CAGE, RIGID, PEEK 9,0X14X12 MM	1000.0901412
BIOMECH CERVICAL INTERBODY CAGE, RIGID, PEEK 6,0X14X12 MM	1000.0601412	BIOMECH CERVICAL INTERBODY CAGE, RIGID, PEEK 9,0X16X14 MM	1000.0901614
BIOMECH CERVICAL INTERBODY CAGE, RIGID, PEEK 6,0X16X14 MM	1000.0601614	BIOMECH CERVICAL INTERBODY CAGE, RIGID, PEEK 10,0X14X12 MM	1000.1001412
BIOMECH CERVICAL INTERBODY CAGE, RIGID, PEEK 7,0X14X12 MM	1000.0701412	BIOMECH CERVICAL INTERBODY CAGE, RIGID, PEEK 10,0X16X14 MM	1000.1001614

Cervical Cage & Prosthesis System

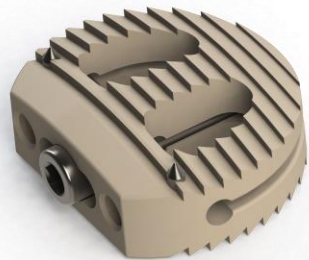
- Cervical Titanium Cage



Product Name	Reference Number	Product Name	Reference Number
BIOMECH CERVICAL INTERBODY CAGE, RIGID, TITANIUM 4,0X14X12 MM	1001.0401412	BIOMECH CERVICAL INTERBODY CAGE, RIGID, TITANIUM 7,0X16X14 MM	1001.0701614
BIOMECH CERVICAL INTERBODY CAGE, RIGID, TITANIUM 4,0X16X14 MM	1001.0401614	BIOMECH CERVICAL INTERBODY CAGE, RIGID, TITANIUM 8,0X14X12 MM	1001.0801412
BIOMECH CERVICAL INTERBODY CAGE, RIGID, TITANIUM 5,0X14X12 MM	1001.0501412	BIOMECH CERVICAL INTERBODY CAGE, RIGID, TITANIUM 8,0X16X14 MM	1001.0801614
BIOMECH CERVICAL INTERBODY CAGE, RIGID, TITANIUM 5,0X16X14 MM	1001.0501614	BIOMECH CERVICAL INTERBODY CAGE, RIGID, TITANIUM 9,0X14X12 MM	1001.0901412
BIOMECH CERVICAL INTERBODY CAGE, RIGID, TITANIUM 6,0X14X12 MM	1001.0601412	BIOMECH CERVICAL INTERBODY CAGE, RIGID, TITANIUM 9,0X16X14 MM	1001.0901614
BIOMECH CERVICAL INTERBODY CAGE, RIGID, TITANIUM 6,0X16X14 MM	1001.0601614	BIOMECH CERVICAL INTERBODY CAGE, RIGID, TITANIUM 10,0X14X12 MM	1001.1001412
BIOMECH CERVICAL INTERBODY CAGE, RIGID, TITANIUM 7,0X14X12 MM	1001.0701412	BIOMECH CERVICAL INTERBODY CAGE, RIGID, TITANIUM 10,0X16X14 MM	1001.1001614

Cervical Cage & Prosthesis System

- Cervical Expandable PEEK Cage (Posterior)



Product Name	Reference Number	Product Name	Reference Number
BIOMECH CERVICAL INTERBODY CAGE, EXPANDABLE(POSTERIOR), PEEK 4,0X14X12 MM	1002.0401412	BIOMECH CERVICAL INTERBODY CAGE, EXPANDABLE(POSTERIOR), PEEK 7,0X16X14 MM	1002.0701614
BIOMECH CERVICAL INTERBODY CAGE, EXPANDABLE(POSTERIOR), PEEK 4,0X16X14 MM	1002.0401614	BIOMECH CERVICAL INTERBODY CAGE, EXPANDABLE(POSTERIOR), PEEK 8,0X14X12 MM	1002.0801412
BIOMECH CERVICAL INTERBODY CAGE, EXPANDABLE(POSTERIOR), PEEK 5,0X14X12 MM	1002.0501412	BIOMECH CERVICAL INTERBODY CAGE, EXPANDABLE(POSTERIOR), PEEK 8,0X16X14 MM	1002.0801614
BIOMECH CERVICAL INTERBODY CAGE, EXPANDABLE(POSTERIOR), PEEK 5,0X16X14 MM	1002.0501614	BIOMECH CERVICAL INTERBODY CAGE, EXPANDABLE(POSTERIOR), PEEK 9,0X14X12 MM	1002.0901412
BIOMECH CERVICAL INTERBODY CAGE, EXPANDABLE(POSTERIOR), PEEK 6,0X14X12 MM	1002.0601412	BIOMECH CERVICAL INTERBODY CAGE, EXPANDABLE(POSTERIOR), PEEK 9,0X16X14 MM	1002.0901614
BIOMECH CERVICAL INTERBODY CAGE, EXPANDABLE(POSTERIOR), PEEK 6,0X16X14 MM	1002.0601614	BIOMECH CERVICAL INTERBODY CAGE, EXPANDABLE(POSTERIOR), PEEK 10,0X14X12 MM	1002.1001412
BIOMECH CERVICAL INTERBODY CAGE, EXPANDABLE(POSTERIOR), PEEK 7,0X14X12 MM	1002.0701412	BIOMECH CERVICAL INTERBODY CAGE, EXPANDABLE(POSTERIOR), PEEK 10,0X16X14 MM	1002.1001614

Cervical Cage & Prosthesis System

- Cervical PEEK Cage with Blade



Product Name	Reference Number	Product Name	Reference Number
BIOMECH CERVICAL INTERBODY CAGE, RIGID, PEEK, WITH TITANIUM BLADE 4,0X14X12 MM	1003.0401412	BIOMECH CERVICAL INTERBODY CAGE, RIGID, PEEK, WITH TITANIUM BLADE 7,0X16X14 MM	1003.0701614
BIOMECH CERVICAL INTERBODY CAGE, RIGID, PEEK, WITH TITANIUM BLADE 4,0X16X14 MM	1003.0401614	BIOMECH CERVICAL INTERBODY CAGE, RIGID, PEEK, WITH TITANIUM BLADE 8,0X14X12 MM	1003.0801412
BIOMECH CERVICAL INTERBODY CAGE, RIGID, PEEK, WITH TITANIUM BLADE 5,0X14X12 MM	1003.0501412	BIOMECH CERVICAL INTERBODY CAGE, RIGID, PEEK, WITH TITANIUM BLADE 8,0X16X14 MM	1003.0801614
BIOMECH CERVICAL INTERBODY CAGE, RIGID, PEEK, WITH TITANIUM BLADE 5,0X16X14 MM	1003.0501614	BIOMECH CERVICAL INTERBODY CAGE, RIGID, PEEK, WITH TITANIUM BLADE 9,0X14X12 MM	1003.0901412
BIOMECH CERVICAL INTERBODY CAGE, RIGID, PEEK, WITH TITANIUM BLADE 6,0X14X12 MM	1003.0601412	BIOMECH CERVICAL INTERBODY CAGE, RIGID, PEEK, WITH TITANIUM BLADE 9,0X16X14 MM	1003.0901614
BIOMECH CERVICAL INTERBODY CAGE, RIGID, PEEK, WITH TITANIUM BLADE 6,0X16X14 MM	1003.0601614	BIOMECH CERVICAL INTERBODY CAGE, RIGID, PEEK, WITH TITANIUM BLADE 10,0X14X12 MM	1003.1001412
BIOMECH CERVICAL INTERBODY CAGE, RIGID, PEEK, WITH TITANIUM BLADE 7,0X14X12 MM	1003.0701412	BIOMECH CERVICAL INTERBODY CAGE, RIGID, PEEK, WITH TITANIUM BLADE 10,0X16X14 MM	1003.1001614

Cervical Cage & Prosthesis System

- Cervical Disc Prosthesis



Product Name	Reference Number
BIOMECH CERVICAL DISC PROSTHESIS 5,0X14X12 MM (ONE PIECE)	1004.0501412
BIOMECH CERVICAL DISC PROSTHESIS 5,0X16X14 MM (ONE PIECE)	1004.0501614
BIOMECH CERVICAL DISC PROSTHESIS 6,0X14X12 MM (ONE PIECE)	1004.0601412
BIOMECH CERVICAL DISC PROSTHESIS 6,0X16X14 MM (ONE PIECE)	1004.0601614
BIOMECH CERVICAL DISC PROSTHESIS 7,0X14X12 MM (ONE PIECE)	1004.0701412
BIOMECH CERVICAL DISC PROSTHESIS 7,0X16X14 MM (ONE PIECE)	1004.0701614
BIOMECH CERVICAL DISC PROSTHESIS 8,0X14X12 MM (ONE PIECE)	1004.0801412
BIOMECH CERVICAL DISC PROSTHESIS 8,0X16X14 MM (ONE PIECE)	1004.0801614

Cervical Cage & Prosthesis System

- Cervical Disc Prosthesis



Product Name	Reference Number
BIOMECH CERVICAL DISC PROSTHESIS 5,0X14X12 MM (BLADE)	1006.0501412
BIOMECH CERVICAL DISC PROSTHESIS 5,0X16X14 MM (BLADE)	1006.0501614
BIOMECH CERVICAL DISC PROSTHESIS 6,0X14X12 MM (BLADE)	1006.0601412
BIOMECH CERVICAL DISC PROSTHESIS 6,0X16X14 MM (BLADE)	1006.0601614
BIOMECH CERVICAL DISC PROSTHESIS 7,0X14X12 MM (BLADE)	1006.0701412
BIOMECH CERVICAL DISC PROSTHESIS 7,0X16X14 MM (BLADE)	1006.0701614
BIOMECH CERVICAL DISC PROSTHESIS 8,0X14X12 MM (BLADE)	1006.0801412
BIOMECH CERVICAL DISC PROSTHESIS 8,0X16X14 MM (BLADE)	1006.0801614

Cervical Cage & Prosthesis System

- Cervical PEEK Cage with Plate



Product Name	Reference Number	Product Name	Reference Number
BIOMECH CERVICAL INTERBODY CAGE, RIGID, PEEK, WITH TITANIUM PLATE 4,0X14X12 MM	1007.0401412	BIOMECH CERVICAL INTERBODY CAGE, RIGID, PEEK, WITH TITANIUM PLATE 7,0X16X14 MM	1007.0701614
BIOMECH CERVICAL INTERBODY CAGE, RIGID, PEEK, WITH TITANIUM PLATE 4,0X16X14 MM	1007.0401614	BIOMECH CERVICAL INTERBODY CAGE, RIGID, PEEK, WITH TITANIUM PLATE 8,0X14X12 MM	1007.0801412
BIOMECH CERVICAL INTERBODY CAGE, RIGID, PEEK, WITH TITANIUM PLATE 5,0X14X12 MM	1007.0501412	BIOMECH CERVICAL INTERBODY CAGE, RIGID, PEEK, WITH TITANIUM PLATE 8,0X16X14 MM	1007.0801614
BIOMECH CERVICAL INTERBODY CAGE, RIGID, PEEK, WITH TITANIUM PLATE 5,0X16X14 MM	1007.0501614	BIOMECH CERVICAL INTERBODY CAGE, RIGID, PEEK, WITH TITANIUM PLATE 9,0X14X12 MM	1007.0901412
BIOMECH CERVICAL INTERBODY CAGE, RIGID, PEEK, WITH TITANIUM PLATE 6,0X14X12 MM	1007.0601412	BIOMECH CERVICAL INTERBODY CAGE, RIGID, PEEK, WITH TITANIUM PLATE 9,0X16X14 MM	1007.0901614
BIOMECH CERVICAL INTERBODY CAGE, RIGID, PEEK, WITH TITANIUM PLATE 6,0X16X14 MM	1007.0601614	BIOMECH CERVICAL INTERBODY CAGE, RIGID, PEEK, WITH TITANIUM PLATE 10,0X14X12 MM	1007.1001412
BIOMECH CERVICAL INTERBODY CAGE, RIGID, PEEK, WITH TITANIUM PLATE 7,0X14X12 MM	1007.0701412	BIOMECH CERVICAL INTERBODY CAGE, RIGID, PEEK, WITH TITANIUM PLATE 10,0X16X14 MM	1007.1001614

Cervical Cage & Prosthesis System

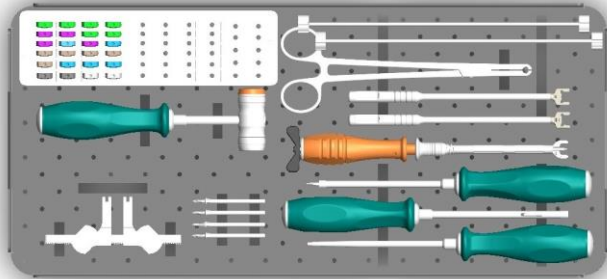
- Cervical Expandable PEEK Cage (Anterior)



Product Name	Reference Number	Product Name	Reference Number
BIOMECH CERVICAL INTERBODY CAGE,EXPANDABLE(ANTERIOR), PEEK, 4,0X14X12 MM	1008.0401412	BIOMECH CERVICAL INTERBODY CAGE,EXPANDABLE(ANTERIOR), PEEK, 7,0X16X14 MM	1008.0701614
BIOMECH CERVICAL INTERBODY CAGE,EXPANDABLE(ANTERIOR), PEEK, 4,0X16X14 MM	1008.0401614	BIOMECH CERVICAL INTERBODY CAGE,EXPANDABLE(ANTERIOR), PEEK, 8,0X14X12 MM	1008.0801412
BIOMECH CERVICAL INTERBODY CAGE,EXPANDABLE(ANTERIOR), PEEK, 5,0X14X12 MM	1008.0501412	BIOMECH CERVICAL INTERBODY CAGE,EXPANDABLE(ANTERIOR), PEEK, 8,0X16X14 MM	1008.0801614
BIOMECH CERVICAL INTERBODY CAGE,EXPANDABLE(ANTERIOR), PEEK, 5,0X16X14 MM	1008.0501614	BIOMECH CERVICAL INTERBODY CAGE,EXPANDABLE(ANTERIOR), PEEK, 9,0X14X12 MM	1008.0901412
BIOMECH CERVICAL INTERBODY CAGE,EXPANDABLE(ANTERIOR), PEEK, 6,0X14X12 MM	1008.0601412	BIOMECH CERVICAL INTERBODY CAGE,EXPANDABLE(ANTERIOR), PEEK, 9,0X16X14 MM	1008.0901614
BIOMECH CERVICAL INTERBODY CAGE,EXPANDABLE(ANTERIOR), PEEK, 6,0X16X14 MM	1008.0601614	BIOMECH CERVICAL INTERBODY CAGE,EXPANDABLE(ANTERIOR), PEEK, 10,0X14X12 MM	1008.1001412
BIOMECH CERVICAL INTERBODY CAGE,EXPANDABLE(ANTERIOR), PEEK, 7,0X14X12 MM	1008.0701412	BIOMECH CERVICAL INTERBODY CAGE,EXPANDABLE(ANTERIOR), PEEK, 10,0X16X14 MM	1008.1001614

Cervical Cage & Prosthesis System

- Instrument Set



Device Name	Reference Number	QTY
Mallet	13000.INS001	1
Trial Inserter (1 - Handle)	13000.INS002	1
Prosthesis Inserter	13000.INS003	1
Cervical Cage Driver	13000.INS004	1
Caspar Pin Driver	13000.INS005	1
Caspar Distractor	13000.INS006	1
Caspar Pin	13000.INS007	4
Cervical Awl	13000.INS008	1
Trial 4 mm	13000.INS009-4	1
Trial 5 mm	13000.INS009-5	1
Trial 6 mm	13000.INS009-6	1
Trial 7 mm	13000.INS009-7	1
Trial 8 mm	13000.INS009-8	1
Cage Box	13000.INS010	1
Container	13000.INS011	1

Anterior Cervical System

- Anterior Cervical Plate



Product Name	Reference Number	Product Name	Reference Number
BIOMECH ANTERIOR CERVICAL PLATE 014 MM (1 LEVEL)	1009.0000014	BIOMECH ANTERIOR CERVICAL PLATE 032 MM (2 LEVEL)	1009.0000032
BIOMECH ANTERIOR CERVICAL PLATE 016 MM (1 LEVEL)	1009.0000016	BIOMECH ANTERIOR CERVICAL PLATE 034 MM (2 LEVEL)	1009.0000034
BIOMECH ANTERIOR CERVICAL PLATE 018 MM (1 LEVEL)	1009.0000018	BIOMECH ANTERIOR CERVICAL PLATE 036 MM (2 LEVEL)	1009.0000036
BIOMECH ANTERIOR CERVICAL PLATE 020 MM (1 LEVEL)	1009.0000020	BIOMECH ANTERIOR CERVICAL PLATE 040 MM (2 LEVEL)	1009.0000040
BIOMECH ANTERIOR CERVICAL PLATE 024 MM (1 LEVEL)	1009.0000024	BIOMECH ANTERIOR CERVICAL PLATE 044 MM (2 LEVEL)	1009.0000044
BIOMECH ANTERIOR CERVICAL PLATE 028 MM (2 LEVEL)	1009.0000028	BIOMECH ANTERIOR CERVICAL PLATE 048 MM (3 LEVEL)	1009.0000048
BIOMECH ANTERIOR CERVICAL PLATE 030 MM (2 LEVEL)	1009.0000030	BIOMECH ANTERIOR CERVICAL PLATE 051 MM (3 LEVEL)	1009.0000051

Anterior Cervical System

- Anterior Cervical Plate



Product Name	Reference Number	Product Name	Reference Number
BIOMECH ANTERIOR CERVICAL PLATE 054 MM (3 LEVEL)	1009.0000054	BIOMECH ANTERIOR CERVICAL PLATE 076 MM (4 LEVEL)	1009.0000076
BIOMECH ANTERIOR CERVICAL PLATE 057 MM (3 LEVEL)	1009.0000057	BIOMECH ANTERIOR CERVICAL PLATE 080 MM (4 LEVEL)	1009.0000080
BIOMECH ANTERIOR CERVICAL PLATE 060 MM (3 LEVEL)	1009.0000060	BIOMECH ANTERIOR CERVICAL PLATE 084 MM (4 LEVEL)	1009.0000084
BIOMECH ANTERIOR CERVICAL PLATE 063 MM (3 LEVEL)	1009.0000063	BIOMECH ANTERIOR CERVICAL PLATE 088 MM (4 LEVEL)	1009.0000088
BIOMECH ANTERIOR CERVICAL PLATE 066 MM (3 LEVEL)	1009.0000066	BIOMECH ANTERIOR CERVICAL PLATE 092 MM (4 LEVEL)	1009.0000092
BIOMECH ANTERIOR CERVICAL PLATE 068 MM (4 LEVEL)	1009.0000068	BIOMECH ANTERIOR CERVICAL PLATE 096 MM (4 LEVEL)	1009.0000096
BIOMECH ANTERIOR CERVICAL PLATE 069 MM (4 LEVEL)	1009.0000069	BIOMECH ANTERIOR CERVICAL PLATE 100 MM (4 LEVEL)	1009.0000100
BIOMECH ANTERIOR CERVICAL PLATE 072 MM (4 LEVEL)	1009.0000072		

Anterior Cervical System

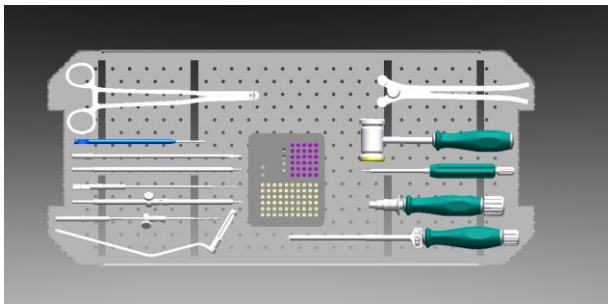
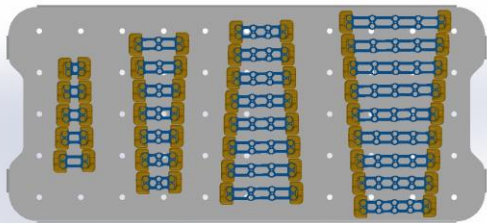
- Anterior Cervical Screw



Product Name	Reference Number	Product Name	Reference Number
BIOMECH ANTERIOR CERVICAL SCREW Ø 4.0X12 MM	1010.0004012	BIOMECH ANTERIOR CERVICAL SCREW Ø 4.5X12 MM	1010.0004512
BIOMECH ANTERIOR CERVICAL SCREW Ø 4.0X14 MM	1010.0004014	BIOMECH ANTERIOR CERVICAL SCREW Ø 4.5X14 MM	1010.0004514
BIOMECH ANTERIOR CERVICAL SCREW Ø 4.0X16 MM	1010.0004016	BIOMECH ANTERIOR CERVICAL SCREW Ø 4.5X16 MM	1010.0004516
BIOMECH ANTERIOR CERVICAL SCREW Ø 4.0X18 MM	1010.0004018	BIOMECH ANTERIOR CERVICAL SCREW Ø 4.5X18 MM	1010.0004518
BIOMECH ANTERIOR CERVICAL SCREW Ø 4.0X20 MM	1010.0004020	BIOMECH ANTERIOR CERVICAL SCREW Ø 4.5X20 MM	1010.0004520

Anterior Cervical System

- Instrument Set



Device Name	Reference Number	QTY	Device Name	Reference Number	QTY
Plate Bender	15000.INS001	1	Awl	15000.INS008	1
Drill Guide	15000.INS002	1	Tap (for 4 mm)	15000.INS009-01	1
Locking Handle	15000.INS003	1	Tap (for 4,5 mm)	15000.INS009-02	1
Adjustable Drill (for 4 mm)	15000.INS004-01	1	Screw Diameter Control	15000.INS010	1
Adjustable Drill (for 4,5 mm)	15000.INS004-02	1	Mallet	15000.INS011	1
Plate Holder	15000.INS005	1	Screw Box	15000.INS012	1
Screw Driver	15000.INS006	2	Tray	15000.INS013	1
Plate Locker	15000.INS007	1	Container	15000.INS014	1

Posterior Cervical System

- Posterior Cervical Polyaxial Screw



Product Name	Reference Number	Product Name	Reference Number
BIOMECH POSTERIOR CERVICAL POLYAXIAL SCREW Ø 3.5X10 MM	1011.0003510	BIOMECH POSTERIOR CERVICAL POLYAXIAL SCREW Ø 4.0X10 MM	1011.0004010
BIOMECH POSTERIOR CERVICAL POLYAXIAL SCREW Ø 3.5X12 MM	1011.0003512	BIOMECH POSTERIOR CERVICAL POLYAXIAL SCREW Ø 4.0X12 MM	1011.0004012
BIOMECH POSTERIOR CERVICAL POLYAXIAL SCREW Ø 3.5X14 MM	1011.0003514	BIOMECH POSTERIOR CERVICAL POLYAXIAL SCREW Ø 4.0X14 MM	1011.0004014
BIOMECH POSTERIOR CERVICAL POLYAXIAL SCREW Ø 3.5X16 MM	1011.0003516	BIOMECH POSTERIOR CERVICAL POLYAXIAL SCREW Ø 4.0X16 MM	1011.0004016
BIOMECH POSTERIOR CERVICAL POLYAXIAL SCREW Ø 3.5X18 MM	1011.0003518	BIOMECH POSTERIOR CERVICAL POLYAXIAL SCREW Ø 4.0X18 MM	1011.0004018
BIOMECH POSTERIOR CERVICAL POLYAXIAL SCREW Ø 3.5X20 MM	1011.0003520	BIOMECH POSTERIOR CERVICAL POLYAXIAL SCREW Ø 4.0X20 MM	1011.0004020
BIOMECH POSTERIOR CERVICAL POLYAXIAL SCREW Ø 3.5X22 MM	1011.0003522	BIOMECH POSTERIOR CERVICAL POLYAXIAL SCREW Ø 4.0X22 MM	1011.0004022
BIOMECH POSTERIOR CERVICAL POLYAXIAL SCREW Ø 3.5X24 MM	1011.0003524	BIOMECH POSTERIOR CERVICAL POLYAXIAL SCREW Ø 4.0X24 MM	1011.0004024
BIOMECH POSTERIOR CERVICAL POLYAXIAL SCREW Ø 3.5X26 MM	1011.0003526	BIOMECH POSTERIOR CERVICAL POLYAXIAL SCREW Ø 4.0X26 MM	1011.0004026
BIOMECH POSTERIOR CERVICAL POLYAXIAL SCREW Ø 3.5X28 MM	1011.0003528	BIOMECH POSTERIOR CERVICAL POLYAXIAL SCREW Ø 4.0X28 MM	1011.0004028
BIOMECH POSTERIOR CERVICAL POLYAXIAL SCREW Ø 3.5X30 MM	1011.0003530	BIOMECH POSTERIOR CERVICAL POLYAXIAL SCREW Ø 4.0X30 MM	1011.0004030

Posterior Cervical System

- Posterior Cervical Rod



Product Name	Reference Number	Product Name	Reference Number
BIOMECH POSTERIOR CERVICAL ROD 35-20 MM	1012.0035020	BIOMECH POSTERIOR CERVICAL ROD 35-90 MM	1012.0035090
BIOMECH POSTERIOR CERVICAL ROD 35-25 MM	1012.0035025	BIOMECH POSTERIOR CERVICAL ROD 35-95 MM	1012.0035095
BIOMECH POSTERIOR CERVICAL ROD 35-30 MM	1012.0035030	BIOMECH POSTERIOR CERVICAL ROD 35-100 MM	1012.0035100
BIOMECH POSTERIOR CERVICAL ROD 35-35 MM	1012.0035035	BIOMECH POSTERIOR CERVICAL ROD 35-105 MM	1012.0035105
BIOMECH POSTERIOR CERVICAL ROD 35-40 MM	1012.0035040	BIOMECH POSTERIOR CERVICAL ROD 35-110 MM	1012.0035110
BIOMECH POSTERIOR CERVICAL ROD 35-45 MM	1012.0035045	BIOMECH POSTERIOR CERVICAL ROD 35-115 MM	1012.0035115
BIOMECH POSTERIOR CERVICAL ROD 35-50 MM	1012.0035050	BIOMECH POSTERIOR CERVICAL ROD 35-120 MM	1012.0035120
BIOMECH POSTERIOR CERVICAL ROD 35-55 MM	1012.0035055	BIOMECH POSTERIOR CERVICAL ROD 35-125 MM	1012.0035125
BIOMECH POSTERIOR CERVICAL ROD 35-60 MM	1012.0035060	BIOMECH POSTERIOR CERVICAL ROD 35-130 MM	1012.0035130
BIOMECH POSTERIOR CERVICAL ROD 35-65 MM	1012.0035065	BIOMECH POSTERIOR CERVICAL ROD 35-135 MM	1012.0035135
BIOMECH POSTERIOR CERVICAL ROD 35-70 MM	1012.0035070	BIOMECH POSTERIOR CERVICAL ROD 35-140 MM	1012.0035140
BIOMECH POSTERIOR CERVICAL ROD 35-75 MM	1012.0035075	BIOMECH POSTERIOR CERVICAL ROD 35-145 MM	1012.0035145
BIOMECH POSTERIOR CERVICAL ROD 35-80 MM	1012.0035080	BIOMECH POSTERIOR CERVICAL ROD 35-150 MM	1012.0035150
BIOMECH POSTERIOR CERVICAL ROD 35-85 MM	1012.0035085		

Posterior Cervical System

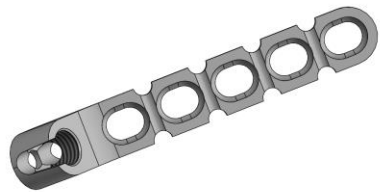
- Posterior Cervical Connector / Domino



Product Name	Reference Number	Product Name	Reference Number
BIOMECH POSTERIOR CERVICAL MULTIAXIAL TRANSVERSE CONNECTOR 20-35MM	1013.0002035	BIOMECH POSTERIOR CERVICAL TRANSVERSE CONNECTOR 50MM	1014.0000050
BIOMECH POSTERIOR CERVICAL MULTIAXIAL TRANSVERSE CONNECTOR 30-45MM	1013.0003045	BIOMECH POSTERIOR CERVICAL TRANSVERSE CONNECTOR 60MM	1014.0000060
BIOMECH POSTERIOR CERVICAL MULTIAXIAL TRANSVERSE CONNECTOR 40-55MM	1013.0004055	BIOMECH POSTERIOR CERVICAL TRANSVERSE CONNECTOR 70MM	1014.0000070
BIOMECH POSTERIOR CERVICAL MULTIAXIAL TRANSVERSE CONNECTOR 50-65MM	1013.0005065	BIOMECH POSTERIOR CERVICAL DOMINO(ONE SIDE) (Ø3,5MM-Ø3,5MM)	1015.0000001
BIOMECH POSTERIOR CERVICAL TRANSVERSE CONNECTOR 10MM	1014.0000010	BIOMECH POSTERIOR CERVICAL DOMINO(DOUBLE SIDE) (Ø3,5MM-Ø3,5MM)	1015.0000002
BIOMECH POSTERIOR CERVICAL TRANSVERSE CONNECTOR 20MM	1014.0000020	BIOMECH POSTERIOR CERVICAL DOMINO(DOUBLE SIDE) (Ø3,5MM-Ø5,5MM)	1015.0000003
BIOMECH POSTERIOR CERVICAL TRANSVERSE CONNECTOR 30MM	1014.0000030	BIOMECH POSTERIOR CERVICAL DOMINO(DOUBLE SIDE) (Ø3,5MM-Ø6,0MM)	1015.0000004
BIOMECH POSTERIOR CERVICAL TRANSVERSE CONNECTOR 40MM	1014.0000040		

Posterior Cervical System

- Posterior Cervical Occipital Plate / Rod



Product Name	Reference Number
BIOMECH POSTERIOR CERVICAL OCCIPITAL PLATE (S)	1016.0000001
BIOMECH POSTERIOR CERVICAL OCCIPITAL PLATE (M)	1016.0000002
BIOMECH POSTERIOR CERVICAL OCCIPITAL PLATE (L)	1016.0000003
BIOMECH POSTERIOR CERVICAL OCCIPITAL PLATE (2 HOLES)	1016.1000002
BIOMECH POSTERIOR CERVICAL OCCIPITAL PLATE (3 HOLES)	1016.1000003
BIOMECH POSTERIOR CERVICAL OCCIPITAL PLATE (4 HOLES)	1016.1000004
BIOMECH POSTERIOR CERVICAL OCCIPITAL PLATE-ROD 3 HOLES	1018.0000003
BIOMECH POSTERIOR CERVICAL OCCIPITAL PLATE-ROD 4 HOLES	1018.0000004
BIOMECH POSTERIOR CERVICAL OCCIPITAL PLATE-ROD 5 HOLES	1018.0000005

Posterior Cervical System

- Posterior Cervical Occipital Plate Screw



Product Name	Reference Number	Product Name	Reference Number
BIOMECH POSTERIOR CERVICAL OCCIPITAL PLATE SCREW Ø 4.0X6 MM	1017.0004006	BIOMECH POSTERIOR CERVICAL OCCIPITAL PLATE SCREW Ø 4.5X6 MM	1017.0004506
BIOMECH POSTERIOR CERVICAL OCCIPITAL PLATE SCREW Ø 4.0X8 MM	1017.0004008	BIOMECH POSTERIOR CERVICAL OCCIPITAL PLATE SCREW Ø 4.5X8 MM	1017.0004508
BIOMECH POSTERIOR CERVICAL OCCIPITAL PLATE SCREW Ø 4.0X10 MM	1017.0004010	BIOMECH POSTERIOR CERVICAL OCCIPITAL PLATE SCREW Ø 4.5X10 MM	1017.0004510
BIOMECH POSTERIOR CERVICAL OCCIPITAL PLATE SCREW Ø 4.0X12 MM	1017.0004012	BIOMECH POSTERIOR CERVICAL OCCIPITAL PLATE SCREW Ø 4.5X12 MM	1017.0004512
BIOMECH POSTERIOR CERVICAL OCCIPITAL PLATE SCREW Ø 4.0X14 MM	1017.0004014	BIOMECH POSTERIOR CERVICAL OCCIPITAL PLATE SCREW Ø 4.5X14 MM	1017.0004514
BIOMECH POSTERIOR CERVICAL OCCIPITAL PLATE SCREW Ø 4.0X16 MM	1017.0004016	BIOMECH POSTERIOR CERVICAL OCCIPITAL PLATE SCREW Ø 4.5X16 MM	1017.0004516
BIOMECH POSTERIOR CERVICAL OCCIPITAL PLATE SCREW Ø 4.0X18 MM	1017.0004018	BIOMECH POSTERIOR CERVICAL OCCIPITAL PLATE SCREW Ø 4.5X18 MM	1017.0004518
BIOMECH POSTERIOR CERVICAL OCCIPITAL PLATE SCREW Ø 4.0X20 MM	1017.0004020	BIOMECH POSTERIOR CERVICAL OCCIPITAL PLATE SCREW Ø 4.5X20 MM	1017.0004520

Posterior Cervical System

- Posterior Cervical Hooks



Product Name	Reference Number	Product Name	Reference Number
BIOMECH POSTERIOR CERVICAL LAMINAR HOOK TYPE 1	1019.0000001	BIOMECH POSTERIOR CERVICAL OFFSET HOOK TYPE 1 RIGHT	1021.0000001
BIOMECH POSTERIOR CERVICAL LAMINAR HOOK TYPE 2	1019.0000002	BIOMECH POSTERIOR CERVICAL OFFSET HOOK TYPE 2 RIGHT	1021.0000002
BIOMECH POSTERIOR CERVICAL LAMINAR HOOK TYPE 3	1019.0000003	BIOMECH POSTERIOR CERVICAL OFFSET HOOK TYPE 3 RIGHT	1021.0000003
BIOMECH POSTERIOR CERVICAL LAMINAR HOOK TYPE 4	1019.0000004	BIOMECH POSTERIOR CERVICAL OFFSET HOOK TYPE 4 RIGHT	1021.0000004
BIOMECH POSTERIOR CERVICAL PEDICUL HOOK TYPE 1	1020.0000001	BIOMECH POSTERIOR CERVICAL OFFSET HOOK TYPE 1 LEFT	1022.0000001
BIOMECH POSTERIOR CERVICAL PEDICUL HOOK TYPE 2	1020.0000002	BIOMECH POSTERIOR CERVICAL OFFSET HOOK TYPE 2 LEFT	1022.0000002
BIOMECH POSTERIOR CERVICAL PEDICUL HOOK TYPE 3	1020.0000003	BIOMECH POSTERIOR CERVICAL OFFSET HOOK TYPE 3 LEFT	1022.0000003
BIOMECH POSTERIOR CERVICAL PEDICUL HOOK TYPE 4	1020.0000004	BIOMECH POSTERIOR CERVICAL OFFSET HOOK TYPE 4 LEFT	1022.0000004

Posterior Cervical System

- Instrument Set



Device Name	Reference Number	QTY	Device Name	Reference Number	QTY
Posterior Cervical Screwdriver	17000.INS001	2	Posterior Cervical Rod&Occipital Plate Holder	17000.INS013	1
Posterior Cervical Plate Screwdriver	17000.INS002	1	Posterior Cervical Rod Bender	17000.INS014	1
Posterior Cervical Setskur Driver	17000.INS003	2	Posterior Cervical Pedicle Probe Straight	17000.INS015	1
Posterior Cervical Setskur Holder	17000.INS004	1	Posterior Cervical Awl	17000.INS016	1
Posterior Cervical Rod Pusher	17000.INS005	1	Posterior Cervical Distractor	17000.INS017	1
Posterior Cervical Feeler Probe Straight	17000.INS006	2	Posterior Cervical Compressor	17000.INS018	1
Posterior Cervical Torque Wrench	17000.INS007	1	Posterior Cervical Screw Box	17000.INS019	1
Posterior Cervical Drill Guide	17000.INS008	1	Posterior Cervical Plate Box	17000.INS020	1
Posterior Cervical Drill 2,0 mm	17000.INS009	1	Posterior Cervical Rod Box	17000.INS021	1
Posterior Cervical Tap 3,5 mm	17000.INS010	1	Posterior Cervical Connector Box	17000.INS022	1
Posterior Cervical Anti Torque	17000.INS011	1	Tray	17000.INS023	1
Posterior Cervical Torque Handle 2Nm	17000.INS012	1	Container	17000.INS024	1

Lumbar Cage System

- PLIF PEEK CAGE



Product Name	Reference Number	Product Name	Reference Number
BIOMECH LUMBAR PLIF CAGE, RIGID, PEEK 25mm-6mm 5°	1100.0025065	BIOMECH LUMBAR PLIF CAGE, RIGID, PEEK 29mm-6mm 5°	1100.0029065
BIOMECH LUMBAR PLIF CAGE, RIGID, PEEK 25mm-7mm 5°	1100.0025075	BIOMECH LUMBAR PLIF CAGE, RIGID, PEEK 29mm-7mm 5°	1100.0029075
BIOMECH LUMBAR PLIF CAGE, RIGID, PEEK 25mm-8mm 5°	1100.0025085	BIOMECH LUMBAR PLIF CAGE, RIGID, PEEK 29mm-8mm 5°	1100.0029085
BIOMECH LUMBAR PLIF CAGE, RIGID, PEEK 25mm-9mm 5°	1100.0025095	BIOMECH LUMBAR PLIF CAGE, RIGID, PEEK 29mm-9mm 5°	1100.0029095
BIOMECH LUMBAR PLIF CAGE, RIGID, PEEK 25mm-10mm 5°	1100.0025105	BIOMECH LUMBAR PLIF CAGE, RIGID, PEEK 29mm-10mm 5°	1100.0029105
BIOMECH LUMBAR PLIF CAGE, RIGID, PEEK 25mm-11mm 5°	1100.0025115	BIOMECH LUMBAR PLIF CAGE, RIGID, PEEK 29mm-11mm 5°	1100.0029115
BIOMECH LUMBAR PLIF CAGE, RIGID, PEEK 25mm-12mm 5°	1100.0025125	BIOMECH LUMBAR PLIF CAGE, RIGID, PEEK 29mm-12mm 5°	1100.0029125
BIOMECH LUMBAR PLIF CAGE, RIGID, PEEK 25mm-13mm 5°	1100.0025135	BIOMECH LUMBAR PLIF CAGE, RIGID, PEEK 29mm-13mm 5°	1100.0029135

Lumbar Cage System

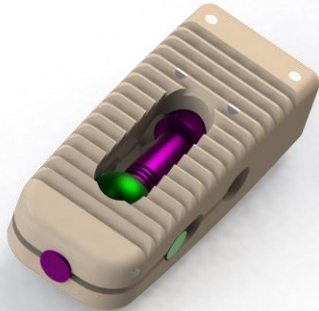
- PLIF TITANIUM CAGE



Product Name	Reference Number	Product Name	Reference Number
BIOMECH LUMBAR PLIF CAGE, RIGID, TITANIUM 25mm-6mm 5°	1101.0025065	BIOMECH LUMBAR PLIF CAGE, RIGID, TITANIUM 29mm-6mm 5°	1101.0029065
BIOMECH LUMBAR PLIF CAGE, RIGID, TITANIUM 25mm-7mm 5°	1101.0025075	BIOMECH LUMBAR PLIF CAGE, RIGID, TITANIUM 29mm-7mm 5°	1101.0029075
BIOMECH LUMBAR PLIF CAGE, RIGID, TITANIUM 25mm-8mm 5°	1101.0025085	BIOMECH LUMBAR PLIF CAGE, RIGID, TITANIUM 29mm-8mm 5°	1101.0029085
BIOMECH LUMBAR PLIF CAGE, RIGID, TITANIUM 25mm-9mm 5°	1101.0025095	BIOMECH LUMBAR PLIF CAGE, RIGID, TITANIUM 29mm-9mm 5°	1101.0029095
BIOMECH LUMBAR PLIF CAGE, RIGID, TITANIUM 25mm-10mm 5°	1101.0025105	BIOMECH LUMBAR PLIF CAGE, RIGID, TITANIUM 29mm-10mm 5°	1101.0029105
BIOMECH LUMBAR PLIF CAGE, RIGID, TITANIUM 25mm-11mm 5°	1101.0025115	BIOMECH LUMBAR PLIF CAGE, RIGID, TITANIUM 29mm-11mm 5°	1101.0029115
BIOMECH LUMBAR PLIF CAGE, RIGID, TITANIUM 25mm-12mm 5°	1101.0025125	BIOMECH LUMBAR PLIF CAGE, RIGID, TITANIUM 29mm-12mm 5°	1101.0029125
BIOMECH LUMBAR PLIF CAGE, RIGID, TITANIUM 25mm-13mm 5°	1101.0025135	BIOMECH LUMBAR PLIF CAGE, RIGID, TITANIUM 29mm-13mm 5°	1101.0029135

Lumbar Cage System

- PLIF PEEK EXPANDABLE CAGE



Product Name	Reference Number
BIOMECH LUMBAR PLIF CAGE, EXPANDABLE, PEEK 6MM	1102.0000006
BIOMECH LUMBAR PLIF CAGE, EXPANDABLE, PEEK 7 MM	1102.0000007
BIOMECH LUMBAR PLIF CAGE, EXPANDABLE, PEEK 8 MM	1102.0000008
BIOMECH LUMBAR PLIF CAGE, EXPANDABLE, PEEK 9 MM	1102.0000009
BIOMECH LUMBAR PLIF CAGE, EXPANDABLE, PEEK 10 MM	1102.0000010
BIOMECH LUMBAR PLIF CAGE, EXPANDABLE, PEEK 11 MM	1102.0000011
BIOMECH LUMBAR PLIF CAGE, EXPANDABLE, PEEK 12 MM	1102.0000012
BIOMECH LUMBAR PLIF CAGE, EXPANDABLE, PEEK 13 MM	1102.0000013
BIOMECH LUMBAR PLIF CAGE, EXPANDABLE, PEEK 14 MM	1102.0000014
BIOMECH LUMBAR PLIF CAGE, EXPANDABLE, PEEK 15 MM	1102.0000015
BIOMECH LUMBAR PLIF CAGE, EXPANDABLE, PEEK 16 MM	1102.0000016

Lumbar Cage System

- PLIF TITANIUM EXPANDABLE CAGE



Product Name	Reference Number
BIOMECH LUMBAR PLIF CAGE, EXPANDABLE, TITANIUM 6MM	1103.0000006
BIOMECH LUMBAR PLIF CAGE, EXPANDABLE, TITANIUM 7 MM	1103.0000007
BIOMECH LUMBAR PLIF CAGE, EXPANDABLE, TITANIUM 8 MM	1103.0000008
BIOMECH LUMBAR PLIF CAGE, EXPANDABLE, TITANIUM 9 MM	1103.0000009
BIOMECH LUMBAR PLIF CAGE, EXPANDABLE, TITANIUM 10 MM	1103.0000010
BIOMECH LUMBAR PLIF CAGE, EXPANDABLE, TITANIUM 11 MM	1103.0000011
BIOMECH LUMBAR PLIF CAGE, EXPANDABLE, TITANIUM 12 MM	1103.0000012
BIOMECH LUMBAR PLIF CAGE, EXPANDABLE, TITANIUM 13 MM	1103.0000013
BIOMECH LUMBAR PLIF CAGE, EXPANDABLE, TITANIUM 14 MM	1103.0000014
BIOMECH LUMBAR PLIF CAGE, EXPANDABLE, TITANIUM 15 MM	1103.0000015
BIOMECH LUMBAR PLIF CAGE, EXPANDABLE, TITANIUM 16 MM	1103.0000016

Lumbar Cage System

- TLIF PEEK CAGE



Product Name	Reference Number	Product Name	Reference Number
BIOMECH LUMBAR TLIF CAGE, RIGID, PEEK 28mm-6mm-5°	1104.0028065	BIOMECH LUMBAR TLIF CAGE, RIGID, PEEK 34mm-6mm-5°	1104.0034065
BIOMECH LUMBAR TLIF CAGE, RIGID, PEEK 28mm-7mm-5°	1104.0028075	BIOMECH LUMBAR TLIF CAGE, RIGID, PEEK 34mm-7mm-5°	1104.0034075
BIOMECH LUMBAR TLIF CAGE, RIGID, PEEK 28mm-8mm-5°	1104.0028085	BIOMECH LUMBAR TLIF CAGE, RIGID, PEEK 34mm-8mm-5°	1104.0034085
BIOMECH LUMBAR TLIF CAGE, RIGID, PEEK 28mm-9mm-5°	1104.0028095	BIOMECH LUMBAR TLIF CAGE, RIGID, PEEK 34mm-9mm-5°	1104.0034095
BIOMECH LUMBAR TLIF CAGE, RIGID, PEEK 28mm-10mm-5°	1104.0028105	BIOMECH LUMBAR TLIF CAGE, RIGID, PEEK 34mm-10mm-5°	1104.0034105
BIOMECH LUMBAR TLIF CAGE, RIGID, PEEK 28mm-11mm-5°	1104.0028115	BIOMECH LUMBAR TLIF CAGE, RIGID, PEEK 34mm-11mm-5°	1104.0034115
BIOMECH LUMBAR TLIF CAGE, RIGID, PEEK 28mm-12mm-5°	1104.0028125	BIOMECH LUMBAR TLIF CAGE, RIGID, PEEK 34mm-12mm-5°	1104.0034125
BIOMECH LUMBAR TLIF CAGE, RIGID, PEEK 28mm-13mm-5°	1104.0028135	BIOMECH LUMBAR TLIF CAGE, RIGID, PEEK 34mm-13mm-5°	1104.0034135
BIOMECH LUMBAR TLIF CAGE, RIGID, PEEK 28mm-14mm-5°	1104.0028145	BIOMECH LUMBAR TLIF CAGE, RIGID, PEEK 34mm-14mm-5°	1104.0034145
BIOMECH LUMBAR TLIF CAGE, RIGID, PEEK 28mm-15mm-5°	1104.0028155	BIOMECH LUMBAR TLIF CAGE, RIGID, PEEK 34mm-15mm-5°	1104.0034155
BIOMECH LUMBAR TLIF CAGE, RIGID, PEEK 28mm-16mm-5°	1104.0028165	BIOMECH LUMBAR TLIF CAGE, RIGID, PEEK 34mm-16mm-5°	1104.0034165

Lumbar Cage System

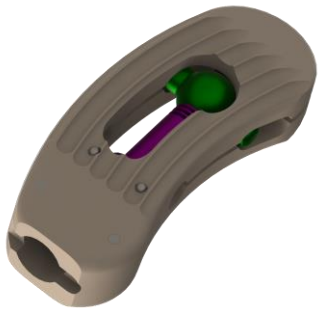
- TLIF TITANIUM CAGE



Product Name	Reference Number	Product Name	Reference Number
BIOMECH LUMBAR TLIF CAGE, RIGID, TITANIUM 28mm-6mm-5°	1105.0028065	BIOMECH LUMBAR TLIF CAGE, RIGID, TITANIUM 34mm-6mm-5°	1105.0034065
BIOMECH LUMBAR TLIF CAGE, RIGID, TITANIUM 28mm-7mm-5°	1105.0028075	BIOMECH LUMBAR TLIF CAGE, RIGID, TITANIUM 34mm-7mm-5°	1105.0034075
BIOMECH LUMBAR TLIF CAGE, RIGID, TITANIUM 28mm-8mm-5°	1105.0028085	BIOMECH LUMBAR TLIF CAGE, RIGID, TITANIUM 34mm-8mm-5°	1105.0034085
BIOMECH LUMBAR TLIF CAGE, RIGID, TITANIUM 28mm-9mm-5°	1105.0028095	BIOMECH LUMBAR TLIF CAGE, RIGID, TITANIUM 34mm-9mm-5°	1105.0034095
BIOMECH LUMBAR TLIF CAGE, RIGID, TITANIUM 28mm-10mm-5°	1105.0028105	BIOMECH LUMBAR TLIF CAGE, RIGID, TITANIUM 34mm-10mm-5°	1105.0034105
BIOMECH LUMBAR TLIF CAGE, RIGID, TITANIUM 28mm-11mm-5°	1105.0028115	BIOMECH LUMBAR TLIF CAGE, RIGID, TITANIUM 34mm-11mm-5°	1105.0034115
BIOMECH LUMBAR TLIF CAGE, RIGID, TITANIUM 28mm-12mm-5°	1105.0028125	BIOMECH LUMBAR TLIF CAGE, RIGID, TITANIUM 34mm-12mm-5°	1105.0034125
BIOMECH LUMBAR TLIF CAGE, RIGID, TITANIUM 28mm-13mm-5°	1105.0028135	BIOMECH LUMBAR TLIF CAGE, RIGID, TITANIUM 34mm-13mm-5°	1105.0034135
BIOMECH LUMBAR TLIF CAGE, RIGID, TITANIUM 28mm-14mm-5°	1105.0028145	BIOMECH LUMBAR TLIF CAGE, RIGID, TITANIUM 34mm-14mm-5°	1105.0034145
BIOMECH LUMBAR TLIF CAGE, RIGID, TITANIUM 28mm-15mm-5°	1105.0028155	BIOMECH LUMBAR TLIF CAGE, RIGID, TITANIUM 34mm-15mm-5°	1105.0034155
BIOMECH LUMBAR TLIF CAGE, RIGID, TITANIUM 28mm-16mm-5°	1105.0028165	BIOMECH LUMBAR TLIF CAGE, RIGID, TITANIUM 34mm-16mm-5°	1105.0034165

Lumbar Cage System

- TLIF PEEK EXPANDABLE CAGE



Product Name	Reference Number	Product Name	Reference Number
BIOMECH LUMBAR TLIF CAGE, EXPANDABLE, PEEK 28mm-6mm-5°	1106.0028065	BIOMECH LUMBAR TLIF CAGE, EXPANDABLE, PEEK 34mm-6mm-5°	1106.0034065
BIOMECH LUMBAR TLIF CAGE, EXPANDABLE, PEEK 28mm-7mm-5°	1106.0028075	BIOMECH LUMBAR TLIF CAGE, EXPANDABLE, PEEK 34mm-7mm-5°	1106.0034075
BIOMECH LUMBAR TLIF CAGE, EXPANDABLE, PEEK 28mm-8mm-5°	1106.0028085	BIOMECH LUMBAR TLIF CAGE, EXPANDABLE, PEEK 34mm-8mm-5°	1106.0034085
BIOMECH LUMBAR TLIF CAGE, EXPANDABLE, PEEK 28mm-9mm-5°	1106.0028095	BIOMECH LUMBAR TLIF CAGE, EXPANDABLE, PEEK 34mm-9mm-5°	1106.0034095
BIOMECH LUMBAR TLIF CAGE, EXPANDABLE, PEEK 28mm-10mm-5°	1106.0028105	BIOMECH LUMBAR TLIF CAGE, EXPANDABLE, PEEK 34mm-10mm-5°	1106.0034105
BIOMECH LUMBAR TLIF CAGE, EXPANDABLE, PEEK 28mm-11mm-5°	1106.0028115	BIOMECH LUMBAR TLIF CAGE, EXPANDABLE, PEEK 34mm-11mm-5°	1106.0034115
BIOMECH LUMBAR TLIF CAGE, EXPANDABLE, PEEK 28mm-12mm-5°	1106.0028125	BIOMECH LUMBAR TLIF CAGE, EXPANDABLE, PEEK 34mm-12mm-5°	1106.0034125
BIOMECH LUMBAR TLIF CAGE, EXPANDABLE, PEEK 28mm-13mm-5°	1106.0028135	BIOMECH LUMBAR TLIF CAGE, EXPANDABLE, PEEK 34mm-13mm-5°	1106.0034135
BIOMECH LUMBAR TLIF CAGE, EXPANDABLE, PEEK 28mm-14mm-5°	1106.0028145	BIOMECH LUMBAR TLIF CAGE, EXPANDABLE, PEEK 34mm-14mm-5°	1106.0034145
BIOMECH LUMBAR TLIF CAGE, EXPANDABLE, PEEK 28mm-15mm-5°	1106.0028155	BIOMECH LUMBAR TLIF CAGE, EXPANDABLE, PEEK 34mm-15mm-5°	1106.0034155
BIOMECH LUMBAR TLIF CAGE, EXPANDABLE, PEEK 28mm-16mm-5°	1106.0028165	BIOMECH LUMBAR TLIF CAGE, EXPANDABLE, PEEK 34mm-16mm-5°	1106.0034165

Lumbar Cage System

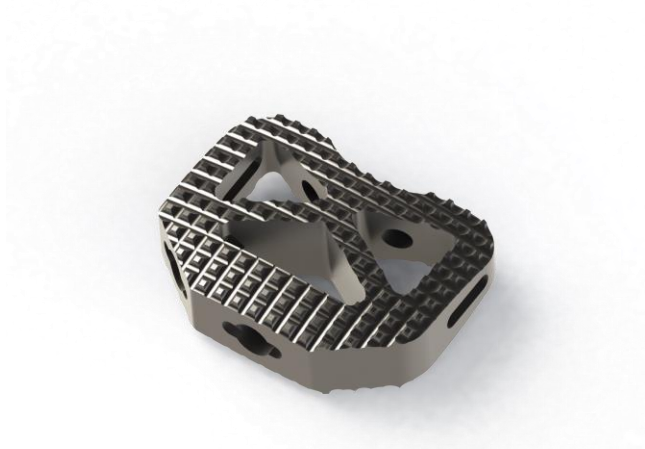
- ALIF PEEK CAGE



Product Name	Reference Number
BIOMECH LUMBAR ALIF CAGE, RIGID, PEEK 30mm-24mm-9,5mm	1107.3024095
BIOMECH LUMBAR ALIF CAGE, RIGID, PEEK 30mm-24mm-11,5mm	1107.3024115
BIOMECH LUMBAR ALIF CAGE, RIGID, PEEK 30mm-24mm-13,5mm	1107.3024135
BIOMECH LUMBAR ALIF CAGE, RIGID, PEEK 30mm-24mm-15,5mm	1107.3024155
BIOMECH LUMBAR ALIF CAGE, RIGID, PEEK 38mm-28mm-9,5mm	1107.3824095
BIOMECH LUMBAR ALIF CAGE, RIGID, PEEK 38mm-28mm-11,5mm	1107.3824115
BIOMECH LUMBAR ALIF CAGE, RIGID, PEEK 38mm-28mm-13,5mm	1107.3824135
BIOMECH LUMBAR ALIF CAGE, RIGID, PEEK 38mm-28mm-15,5mm	1107.3824155

Lumbar Cage System

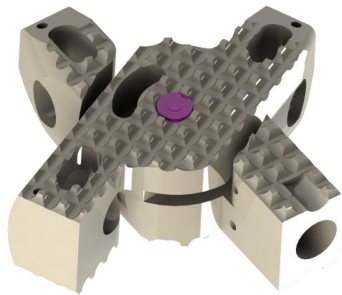
- ALIF TITANIUM CAGE



Product Name	Reference Number
BIOMECH LUMBAR ALIF CAGE, RIGID, TITANIUM 30mm-24mm-9,5mm	1108.3024095
BIOMECH LUMBAR ALIF CAGE, RIGID, TITANIUM 30mm-24mm-11,5mm	1108.3024115
BIOMECH LUMBAR ALIF CAGE, RIGID, TITANIUM 30mm-24mm-13,5mm	1108.3024135
BIOMECH LUMBAR ALIF CAGE, RIGID, TITANIUM 30mm-24mm-15,5mm	1108.3024155
BIOMECH LUMBAR ALIF CAGE, RIGID, TITANIUM 38mm-28mm-9,5mm	1108.3824095
BIOMECH LUMBAR ALIF CAGE, RIGID, TITANIUM 38mm-28mm-11,5mm	1108.3824115
BIOMECH LUMBAR ALIF CAGE, RIGID, TITANIUM 38mm-28mm-13,5mm	1108.3824135
BIOMECH LUMBAR ALIF CAGE, RIGID, TITANIUM 38mm-28mm-15,5mm	1108.3824155

Lumbar Cage System

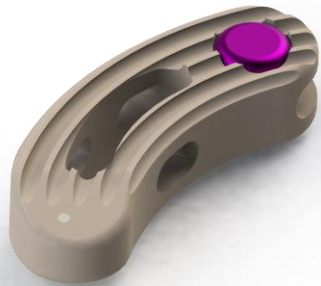
- ALIF EXPANDABLE CAGE



Product Name	Reference Number
BIOMECH LUMBAR ALIF CAGE, EXPANDABLE 30mm-24mm-9,5mm	1109.3024095
BIOMECH LUMBAR ALIF CAGE, EXPANDABLE 30mm-24mm-11,5mm	1109.3024115
BIOMECH LUMBAR ALIF CAGE, EXPANDABLE 30mm-24mm-13,5mm	1109.3024135
BIOMECH LUMBAR ALIF CAGE, EXPANDABLE 30mm-24mm-15,5mm	1109.3024155
BIOMECH LUMBAR ALIF CAGE, EXPANDABLE 38mm-28mm-9,5mm	1109.3824095
BIOMECH LUMBAR ALIF CAGE, EXPANDABLE 38mm-28mm-11,5mm	1109.3824115
BIOMECH LUMBAR ALIF CAGE, EXPANDABLE 38mm-28mm-13,5mm	1109.3824135
BIOMECH LUMBAR ALIF CAGE, EXPANDABLE 38mm-28mm-15,5mm	1109.3824155

Lumbar Cage System

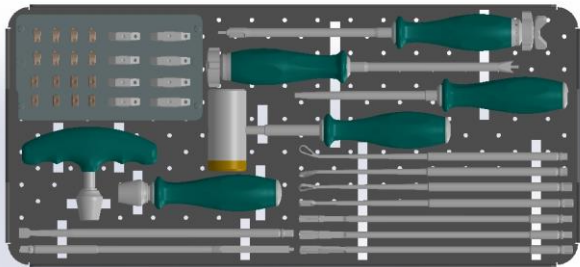
- TLIF PEEK ADJUSTABLE CAGE



Product Name	Reference Number	Product Name	Reference Number
BIOMECH LUMBAR TLIF CAGE, RIGID, PEEK(TURN) 28mm-6mm-5°	1110.0028065	BIOMECH LUMBAR TLIF CAGE, RIGID, PEEK(TURN) 33mm-6mm-5°	1110.0033065
BIOMECH LUMBAR TLIF CAGE, RIGID, PEEK(TURN) 28mm-7mm-5°	1110.0028075	BIOMECH LUMBAR TLIF CAGE, RIGID, PEEK(TURN) 33mm-7mm-5°	1110.0033075
BIOMECH LUMBAR TLIF CAGE, RIGID, PEEK(TURN) 28mm-8mm-5°	1110.0028085	BIOMECH LUMBAR TLIF CAGE, RIGID, PEEK(TURN) 33mm-8mm-5°	1110.0033085
BIOMECH LUMBAR TLIF CAGE, RIGID, PEEK(TURN) 28mm-9mm-5°	1110.0028095	BIOMECH LUMBAR TLIF CAGE, RIGID, PEEK(TURN) 33mm-9mm-5°	1110.0033095
BIOMECH LUMBAR TLIF CAGE, RIGID, PEEK(TURN) 28mm-10mm-5°	1110.0028105	BIOMECH LUMBAR TLIF CAGE, RIGID, PEEK(TURN) 33mm-10mm-5°	1110.0033105
BIOMECH LUMBAR TLIF CAGE, RIGID, PEEK(TURN) 28mm-11mm-5°	1110.0028115	BIOMECH LUMBAR TLIF CAGE, RIGID, PEEK(TURN) 33mm-11mm-5°	1110.0033115
BIOMECH LUMBAR TLIF CAGE, RIGID, PEEK(TURN) 28mm-12mm-5°	1110.0028125	BIOMECH LUMBAR TLIF CAGE, RIGID, PEEK(TURN) 33mm-12mm-5°	1110.0033125
BIOMECH LUMBAR TLIF CAGE, RIGID, PEEK(TURN) 28mm-13mm-5°	1110.0028135	BIOMECH LUMBAR TLIF CAGE, RIGID, PEEK(TURN) 33mm-13mm-5°	1110.0033135
BIOMECH LUMBAR TLIF CAGE, RIGID, PEEK(TURN) 28mm-14mm-5°	1110.0028145	BIOMECH LUMBAR TLIF CAGE, RIGID, PEEK(TURN) 33mm-14mm-5°	1110.0033145
BIOMECH LUMBAR TLIF CAGE, RIGID, PEEK(TURN) 28mm-15mm-5°	1110.0028155	BIOMECH LUMBAR TLIF CAGE, RIGID, PEEK(TURN) 33mm-15mm-5°	1110.0033155
BIOMECH LUMBAR TLIF CAGE, RIGID, PEEK(TURN) 28mm-16mm-5°	1110.0028165	BIOMECH LUMBAR TLIF CAGE, RIGID, PEEK(TURN) 33mm-16mm-5°	1110.0033165

Lumbar Cage System

- Instrument Set



Device Name	Reference Number	QTY	Device Name	Reference Number	QTY
I - Handle	14000.INS001	1	PLIF Trial 9 mm	14000.INS013-P9	1
Mallet	14000.INS002	1	PLIF Trial 10 mm	14000.INS013-P10	1
Right Angled Curette	14000.INS003	1	PLIF Trial 11 mm	14000.INS013-P11	1
Rectangular Angled Curette	14000.INS004	1	PLIF Trial 12 mm	14000.INS013-P12	1
Left Angled Curette	14000.INS005	1	TLIF Trial 7 mm	14000.INS013-T7	1
Rasp	14000.INS006	1	TLIF Trial 8 mm	14000.INS013-T8	1
Shaver 7mm	14000.INS007	1	TLIF Trial 9 mm	14000.INS013-T9	1
Shaver 9mm	14000.INS008	1	TLIF Trial 10 mm	14000.INS013-T10	1
Shaver 11mm	14000.INS009	1	TLIF Trial 11 mm	14000.INS013-T11	1
TLIF Impactor (Adj.TLIF)	14000.INS011	1	TLIF Trial 12 mm	14000.INS013-T12	1
Impactor (PLIF - Exp.PLIF/TLIF)	14000.INS012	1	Cage Box	14000.INS014	1
PLIF Trial 7 mm	14000.INS013-P7	1	Container	14000.INS015	1
PLIF Trial 8 mm	14000.INS013-P8	1			

Thoracolumbar Stabilization System

- Polyaxial Screw



Product Name	Reference Number	Product Name	Reference Number
BIOMECH POSTERIOR POLYAXIAL STABILIZATION SCREW 4,5X25	1200.0004525	BIOMECH POSTERIOR POLYAXIAL STABILIZATION SCREW 5,5X45	1200.0005545
BIOMECH POSTERIOR POLYAXIAL STABILIZATION SCREW 4,5X30	1200.0004530	BIOMECH POSTERIOR POLYAXIAL STABILIZATION SCREW 5,5X50	1200.0005550
BIOMECH POSTERIOR POLYAXIAL STABILIZATION SCREW 4,5X35	1200.0004535	BIOMECH POSTERIOR POLYAXIAL STABILIZATION SCREW 5,5X55	1200.0005555
BIOMECH POSTERIOR POLYAXIAL STABILIZATION SCREW 4,5X40	1200.0004540	BIOMECH POSTERIOR POLYAXIAL STABILIZATION SCREW 6,2X35	1200.0006235
BIOMECH POSTERIOR POLYAXIAL STABILIZATION SCREW 5,5X30	1200.0005530	BIOMECH POSTERIOR POLYAXIAL STABILIZATION SCREW 6,2X40	1200.0006240
BIOMECH POSTERIOR POLYAXIAL STABILIZATION SCREW 5,5X35	1200.0005535	BIOMECH POSTERIOR POLYAXIAL STABILIZATION SCREW 6,2X45	1200.0006245
BIOMECH POSTERIOR POLYAXIAL STABILIZATION SCREW 5,5X40	1200.0005540	BIOMECH POSTERIOR POLYAXIAL STABILIZATION SCREW 6,2X50	1200.0006250

Thoracolumbar Stabilization System

- Polyaxial Screw



Product Name	Reference Number	Product Name	Reference Number
BIOMECH POSTERIOR POLYAXIAL STABILIZATION SCREW 6,2X55	1200.0006255	BIOMECH POSTERIOR POLYAXIAL STABILIZATION SCREW 7,5X45	1200.0007545
BIOMECH POSTERIOR POLYAXIAL STABILIZATION SCREW 7,0X35	1200.0007035	BIOMECH POSTERIOR POLYAXIAL STABILIZATION SCREW 7,5X50	1200.0007550
BIOMECH POSTERIOR POLYAXIAL STABILIZATION SCREW 7,0X40	1200.0007040	BIOMECH POSTERIOR POLYAXIAL STABILIZATION SCREW 7,5X55	1200.0007555
BIOMECH POSTERIOR POLYAXIAL STABILIZATION SCREW 7,0X45	1200.0007045	BIOMECH POSTERIOR POLYAXIAL STABILIZATION SCREW 8,5X45	1200.0008545
BIOMECH POSTERIOR POLYAXIAL STABILIZATION SCREW 7,0X50	1200.0007050	BIOMECH POSTERIOR POLYAXIAL STABILIZATION SCREW 8,5X50	1200.0008550
BIOMECH POSTERIOR POLYAXIAL STABILIZATION SCREW 7,0X55	1200.0007055	BIOMECH POSTERIOR POLYAXIAL STABILIZATION SCREW 8,5X55	1200.0008555
BIOMECH POSTERIOR POLYAXIAL STABILIZATION SCREW 7,5X40	1200.0007540	BIOMECH POSTERIOR POLYAXIAL STABILIZATION SCREW 8,5X60	1200.0008560

Thoracolumbar Stabilization System

- Spondylolisthesis Screw



Product Name	Reference Number
BIOMECH POLYAXIAL SPONDYLOLISTHESIS SCREW 5,5X40	1202.0005540
BIOMECH POLYAXIAL SPONDYLOLISTHESIS SCREW 5,5X45	1202.0005545
BIOMECH POLYAXIAL SPONDYLOLISTHESIS SCREW 5,5X50	1202.0005550
BIOMECH POLYAXIAL SPONDYLOLISTHESIS SCREW 5,5X55	1202.0005555
BIOMECH POLYAXIAL SPONDYLOLISTHESIS SCREW 6,2X40	1202.0006240
BIOMECH POLYAXIAL SPONDYLOLISTHESIS SCREW 6,2X45	1202.0006245
BIOMECH POLYAXIAL SPONDYLOLISTHESIS SCREW 6,2X50	1202.0006250
BIOMECH POLYAXIAL SPONDYLOLISTHESIS SCREW 6,2X55	1202.0006255

Thoracolumbar Stabilization System

- Titanium Rod



Product Name	Reference Number	Product Name	Reference Number
BIOMECH TITANIUM ROD 55-45 MM	1210.0055045	BIOMECH TITANIUM ROD 55-165 MM	1210.0055165
BIOMECH TITANIUM ROD 55-55 MM	1210.0055055	BIOMECH TITANIUM ROD 55-175 MM	1210.0055175
BIOMECH TITANIUM ROD 55-65 MM	1210.0055065	BIOMECH TITANIUM ROD 55-185 MM	1210.0055185
BIOMECH TITANIUM ROD 55-75 MM	1210.0055075	BIOMECH TITANIUM ROD 55-195 MM	1210.0055195
BIOMECH TITANIUM ROD 55-85 MM	1210.0055085	BIOMECH TITANIUM ROD 55-205 MM	1210.0055205
BIOMECH TITANIUM ROD 55-95 MM	1210.0055095	BIOMECH TITANIUM ROD 55-230 MM	1210.0055230
BIOMECH TITANIUM ROD 55-105 MM	1210.0055105	BIOMECH TITANIUM ROD 55-300 MM	1210.0055300
BIOMECH TITANIUM ROD 55-125 MM	1210.0055125	BIOMECH TITANIUM ROD 55-350 MM	1210.0055350
BIOMECH TITANIUM ROD 55-135 MM	1210.0055135	BIOMECH TITANIUM ROD 55-400 MM	1210.0055400
BIOMECH TITANIUM ROD 55-145 MM	1210.0055145	BIOMECH TITANIUM ROD 55-450 MM	1210.0055450
BIOMECH TITANIUM ROD 55-155 MM	1210.0055155	BIOMECH TITANIUM ROD 55-500 MM	1210.0055500

Thoracolumbar Stabilization System

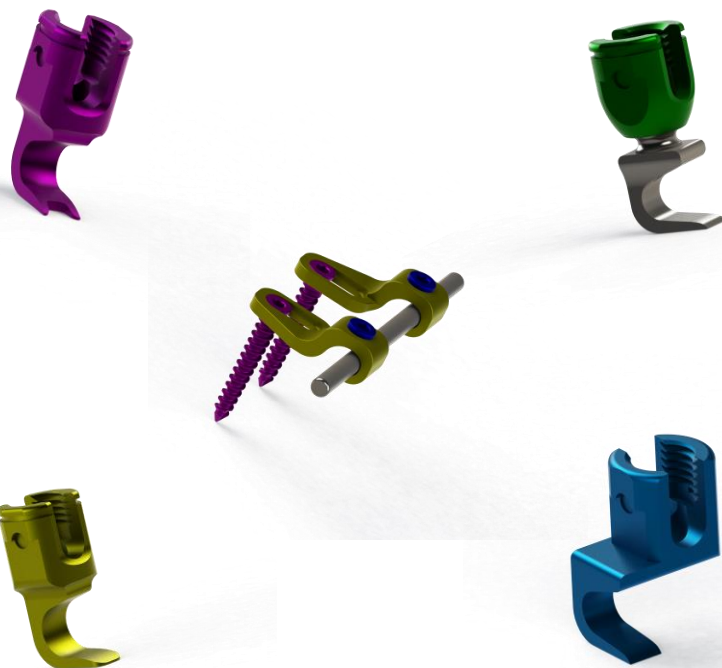
- Connector & Domino



Product Name	Reference Number	Product Name	Reference Number
BIOMECH CROSSLINK 40 MM	1214.0055040	BIOMECH MULTIAXIAL CONNECTOR 40 MM	1216.0055040
BIOMECH CROSSLINK 50 MM	1214.0055050	BIOMECH MULTIAXIAL CONNECTOR 60 MM	1216.0055060
BIOMECH CROSSLINK 60 MM	1214.0055060	BIOMECH MULTIAXIAL CONNECTOR 80 MM	1216.0055080
BIOMECH CROSSLINK 70 MM	1214.0055070	BIOMECH MULTIAXIAL CONNECTOR 100 MM	1216.0055100
BIOMECH CROSSLINK 80 MM	1214.0055080	BIOMECH DOMINO ONE SIDE	1217.0000001
BIOMECH CROSSLINK 90 MM	1214.0055090	BIOMECH DOMINO DOUBLE SIDE	1217.0000002
BIOMECH CROSSLINK 100 MM	1214.0055100	BIOMECH LATERAL CONNECTOR TYPE 1	1218.0000001
BIOMECH OMNIAXIAL CONNECTOR 40 MM	1215.0000040	BIOMECH LATERAL CONNECTOR TYPE 2	1218.0000002
BIOMECH OMNIAXIAL CONNECTOR 60 MM	1215.0000060	BIOMECH LATERAL CONNECTOR TYPE 3	1218.0000003
BIOMECH OMNIAXIAL CONNECTOR 80 MM	1215.0000080	BIOMECH LATERAL CONNECTOR TYPE 4	1218.0000004
BIOMECH OMNIAXIAL CONNECTOR 100 MM	1215.0000100		

Thoracolumbar Stabilization System

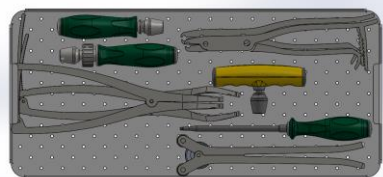
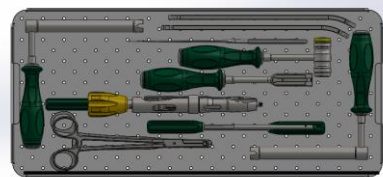
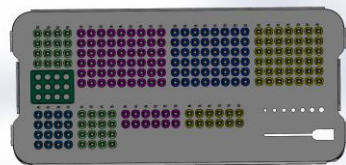
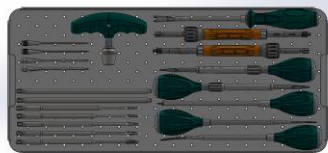
- Hooks



Product Name	Reference Number	Product Name	Reference Number
BIOMECH PEDICLE HOOK 6 MM	1219.0005506	BIOMECH OFFSET HOOK LEFT 10 MM	1222.0005510
BIOMECH PEDICLE HOOK 8 MM	1219.0005508	BIOMECH OFFSET HOOK LEFT 12 MM	1222.0005512
BIOMECH PEDICLE HOOK 10 MM	1219.0005510	BIOMECH POLYAXIAL HOOK 6 MM	1223.0005506
BIOMECH PEDICLE HOOK 12 MM	1219.0005512	BIOMECH POLYAXIAL HOOK 8 MM	1223.0005508
BIOMECH LAMINAR HOOK 6 MM	1220.0005506	BIOMECH POLYAXIAL HOOK 10 MM	1223.0005510
BIOMECH LAMINAR HOOK 8 MM	1220.0005508	BIOMECH POLYAXIAL HOOK 12 MM	1223.0005512
BIOMECH LAMINAR HOOK 10 MM	1220.0005510	BIOMECH TRANSVERSE HOOK RIGHT 6 MM	1224.0005506
BIOMECH LAMINAR HOOK 12 MM	1220.0005512	BIOMECH TRANSVERSE HOOK RIGHT 8 MM	1224.0005508
BIOMECH OFFSET HOOK RIGHT 6 MM	1221.0005506	BIOMECH TRANSVERSE HOOK RIGHT 10 MM	1224.0005510
BIOMECH OFFSET HOOK RIGHT 8 MM	1221.0005508	BIOMECH TRANSVERSE HOOK RIGHT 12 MM	1224.0005512
BIOMECH OFFSET HOOK RIGHT 10 MM	1221.0005510	BIOMECH TRANSVERSE HOOK LEFT 6 MM	1225.0005506
BIOMECH OFFSET HOOK RIGHT 12 MM	1221.0005512	BIOMECH TRANSVERSE HOOK LEFT 8 MM	1225.0005508
BIOMECH OFFSET HOOK LEFT 6 MM	1222.0005506	BIOMECH TRANSVERSE HOOK LEFT 10 MM	1225.0005510
BIOMECH OFFSET HOOK LEFT 8 MM	1222.0005508	BIOMECH TRANSVERSE HOOK LEFT 12 MM	1225.0005512

Thoracolumbar Stabilization System

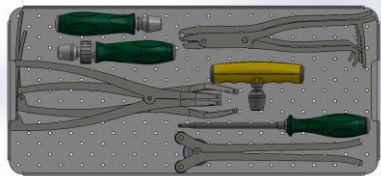
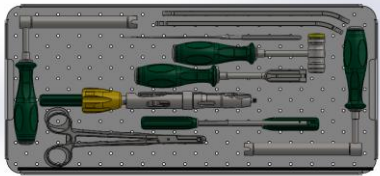
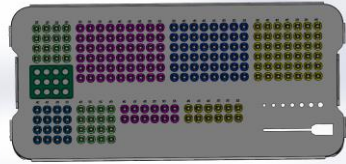
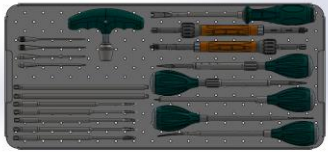
- Instrument Set



Device Name	Reference Number	QTY	Device Name	Reference Number	QTY
Multi-Adaptable Screwdriver	12000.INS001	2	I-Handle, 1/4" square	12000.INS011	1
Feeler Probe Straight	12000.INS002	1	Rod Holder	12000.INS012	1
Feeler Probe Curved	12000.INS003	1	Rod Persuader	12000.INS013	1
Pedicle Probe Curved	12000.INS004	1	Anti-Torque	12000.INS014	1
Pedicle Probe Straight	12000.INS005	1	Torx Wrench for Nut, 1/4" square, T30	12000.INS015	2
Tap Ø3,5mm, 1/4" square	12000.INS006	1	Nut Inserter Self Holding, 1/4" square, T30	12000.INS016	1
Tap Ø4,5mm, 1/4" square	12000.INS007	1	Torque T-Handle 10Nm, 1/4" square	12000.INS017	1
Tap Ø5,5mm, 1/4" square	12000.INS008	1	T-Handle, 1/4" square	12000.INS018	1
Tap Ø6,5mm, 1/4" square	12000.INS009	1	Wing Removing Plier	12000.INS019	1
Fixed Awl	12000.INS010	1	AA-3.5 Wrench	12000.INS020	1

Thoracolumbar Stabilization System

- Instrument Set



Device Name	Reference Number	QTY	Device Name	Reference Number	QTY
Transverse Holder	12000.INS021	1	Pedicle Marker Non-Stop	12000.INS031	4
Rod Holding Clamp Strong	12000.INS022	2	I-Handle Straight, Ratchet, 1/4" square	12000.INS032	1
Rod Bender	12000.INS023	1	Hammer	12000.INS033	1
Distractor	12000.INS024	1	Instrument Tray	12000.INS034	3
In Situ Rod Bender Right	12000.INS025	1	Screw Tray	12000.INS035	1
In Situ Rod Bender Left	12000.INS026	1	Rod-Connector Tray	12000.INS036	1
Rod Pusher Straight	12000.INS027	1	Container	12000.INS037	2
Rocker & Hex Wrench	12000.INS028	1	Multi-Adaptable Screwdriver (Cannulated)	12001.INS101	Opt.
Compressor	12000.INS029	1	K-Wire (Kirschner)	12001.INS102	Opt.
Pedicle Marker Stop	12000.INS030	4			

Corpectomy System

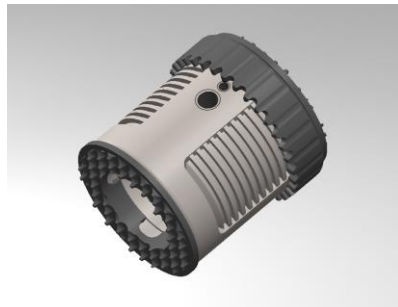
- Pyramesh



Product Name	Reference Number	Product Name	Reference Number
BIOMECH CORPECTOMY MESH ϕ 8 / 80mm	1300.000880	BIOMECH CORPECTOMY MESH ϕ 19 / 80mm	1300.0001980
BIOMECH CORPECTOMY MESH ϕ 9 / 80mm	1300.000980	BIOMECH CORPECTOMY MESH ϕ 20 / 80mm	1300.0002080
BIOMECH CORPECTOMY MESH ϕ 10 / 80mm	1300.0001080	BIOMECH CORPECTOMY MESH ϕ 21 / 80mm	1300.0002180
BIOMECH CORPECTOMY MESH ϕ 11 / 80mm	1300.0001180	BIOMECH CORPECTOMY MESH ϕ 22 / 80mm	1300.0002280
BIOMECH CORPECTOMY MESH ϕ 12 / 80mm	1300.0001280	BIOMECH CORPECTOMY MESH ϕ 23 / 80mm	1300.0002380
BIOMECH CORPECTOMY MESH ϕ 13 / 80mm	1300.0001380	BIOMECH CORPECTOMY MESH ϕ 24 / 80mm	1300.0002480
BIOMECH CORPECTOMY MESH ϕ 14 / 80mm	1300.0001480	BIOMECH CORPECTOMY MESH ϕ 25 / 80mm	1300.0002580
BIOMECH CORPECTOMY MESH ϕ 15 / 80mm	1300.0001580	BIOMECH CORPECTOMY PROFIL MESH 13-18mm	1301.0001318
BIOMECH CORPECTOMY MESH ϕ 16 / 80mm	1300.0001680	BIOMECH CORPECTOMY PROFIL MESH 16-21mm	1301.0001621
BIOMECH CORPECTOMY MESH ϕ 17 / 80mm	1300.0001780	BIOMECH CORPECTOMY PROFIL MESH 21-28mm	1301.0002128
BIOMECH CORPECTOMY MESH ϕ 18 / 80mm	1300.0001880		

Corpectomy System

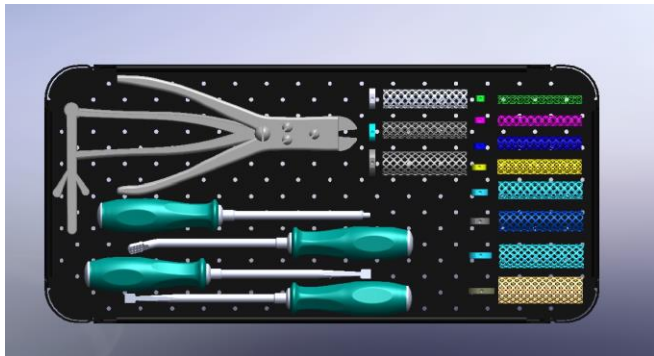
- Corpectomy Cage



Product Name	Reference Number	Product Name	Reference Number
BIOMECH CERVICAL CORPECTOMY CAGE WITH PLATE, DISTRRACTABLE Ø 16 mm / 20-25 mm	1302.0001620	BIOMECH LUMBAR CORPECTOMY CAGE, DISTRRACTABLE Ø 21 MM X 21 MM	1302.1002121
BIOMECH CERVICAL CORPECTOMY CAGE WITH PLATE, DISTRRACTABLE Ø 16 mm / 26-37 mm	1302.0001626	BIOMECH LUMBAR CORPECTOMY CAGE, DISTRRACTABLE Ø 21 MM X 27 MM	1302.1002127
BIOMECH CERVICAL CORPECTOMY CAGE WITH PLATE, DISTRRACTABLE Ø 16 mm / 38-61 mm	1302.0001638	BIOMECH LUMBAR CORPECTOMY CAGE, DISTRRACTABLE Ø 21 MM X 39 MM	1302.1002139
BIOMECH CERVICAL CORPECTOMY CAGE WITH PLATE, DISTRRACTABLE Ø 21 mm / 21-26 mm	1302.0002121	BIOMECH LUMBAR CORPECTOMY CAGE, DISTRRACTABLE Ø 27 MM X 28 MM	1302.1002728
BIOMECH CERVICAL CORPECTOMY CAGE WITH PLATE, DISTRRACTABLE Ø 21 mm / 27-38 mm	1302.0002127	BIOMECH LUMBAR CORPECTOMY CAGE, DISTRRACTABLE Ø 27 MM X 40 MM	1302.1002740
BIOMECH CERVICAL CORPECTOMY CAGE WITH PLATE, DISTRRACTABLE Ø 21 mm / 39-62 mm	1302.0002139		
BIOMECH CERVICAL CORPECTOMY CAGE WITH PLATE, DISTRRACTABLE Ø 27 mm / 28-39 mm	1302.0002728		
BIOMECH CERVICAL CORPECTOMY CAGE WITH PLATE, DISTRRACTABLE Ø 27 mm / 40-63 mm	1302.0002740		

Corpectomy System

- Pyramesh Instrument Set



Device Name	Reference Number	QTY
Osteotome Straight	16000.INS001	1
Angled Osteotome	16000.INS002	1
Angled Rasp	16000.INS003	1
Mesh Trail Inserter	16000.INS004	1
Mesh Cutter	16000.INS005	1
Mesh Holder	16000.INS006	1
Mesh Trail Implants	16000.INS007	11
Tray	16000.INS008	1
Container	16000.INS009	1

The logo for Ligamed Medical features the word "LIGAMED" in a large, bold, dark blue sans-serif font. A registered trademark symbol (®) is positioned to the upper right of the "D". Below "LIGAMED", the word "MEDICAL" is written in a smaller, grey, all-caps sans-serif font. Two horizontal lines, one on each side, are positioned below "MEDICAL", extending outwards from the word.

LIGAMED[®]
— M E D I C A L —

*Creative, Permanent
Solutions*

HEADQUARTER

Address : Site Mah. Baha Sok. Koza Palace No: 2/3
Ümraniye, ISTANBUL-TURKEY

Phone : +90 216 594 57 21 - 31

Fax : +90 216 594 57 71

Web : www.ligamed.com.tr

e-mail : info@ligamed.com.tr