

Anatomy



Human anatomy

JY/A6090 Female Urinary Organ

Features:

1. Size: 40cm*28cm*10cm
2. Material: Advanced PVC



JY/A6093 Block Model of Urinary System

Features:

1. Shows the structure of the urinary system, including kidney, ureter, bladder, etc.
2. 19 positions are displayed.
3. Size: Life size, 3 parts
4. Material: Advanced PVC



JY/A6091 Male Urinary Organ

Features:

1. Size: 40cm*28cm*10cm
2. Material: Advanced PVC



JY/A6098 Diseased Kidney

Features:

1. Pathological changes of kidney
2. Material: Advanced PVC



JY/A6094 Model of Bladder

Features:

1. According to the normal bladder
2. Size: Life size
3. Material: Advanced PVC



JY/A6095 Urinary System

Features:

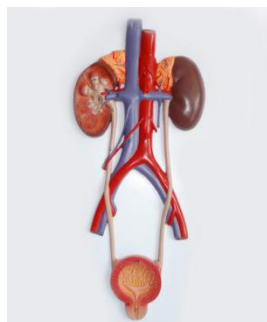
1. Shows bladder, prostate and right kidney.
2. Separated into 4 parts and 22 positions are displayed.
3. Size: 41cm*28cm*13cm
4. Material: Advanced PVC



JY/A6092 Relief Model of Urinary System

Features:

1. Shows the structure of the urinary system, including kidney, ureter, bladder, etc.
2. 19 positions are displayed.
3. Size: Life size
4. Material: Advanced PVC



JY/A6096 Kidney Model

Features:

1. Shows the anatomical structure of kidney, including cortical substance, medulla, minor renal calices, greater renal calices, pelvis of ureter, ureter, renal arteries, renal vena, etc.
2. 15 positions are displayed.
3. Size: 3 times enlarged.



JY/A6097 Kidney Model

Features:

1. Consists of 2 parts, shows the anatomical structure kidney, including cortical substance, medulla, proximal convoluted tubule, distal convoluted tubule, connecting canal, mammillary ducts, minor renal calices, greater renal calices, pelvis of ureter, ureter, interlobular arteries and vena, renal arteries and vena, adrenal gland.
2. Size: Life size
3. Material: Advanced PVC



JY/A6099 Deluxe Kidney with Adrenal Gland

Features:

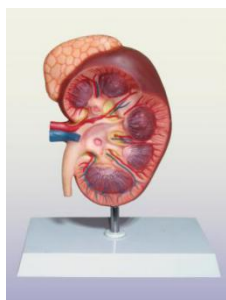
1. Shows the anatomical structure kidney, including cortical substance, medulla, proximal convoluted tubule, distal convoluted tubule, connecting canal, mammillary ducts, minor renal calices, greater renal calices, pelvis of ureter, ureter, interlobular arteries and vena, renal arteries and vena, adrenal gland.
2. Size: 3 times enlarged
3. Material: Advanced PVC



JY/A6100 Kidney With Adrenal Gland

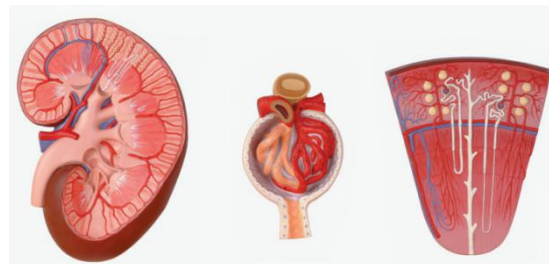
Features:

1. Shows the anatomical structure kidney, including cortical substance, medulla, proximal convoluted tubule, distal convoluted tubule, connecting canal, mammillary ducts, minor renal calices, greater renal calices, pelvis of ureter, ureter, interlobular arteries and vena, renal arteries and vena, adrenal gland.
2. Size: 2 times enlarged
3. Material: Advanced PVC



JY/A6101 Kidney, Nephron and Glomerulus

Features:



1. This unit consists of 3 models. They show the structure of the renal section plane (including cortical substance, medulla, proximal convoluted tubule, distal convoluted tubule, connecting canal, mammillary ducts, minor renal calices, greater renal calices, pelvis of ureter, ureter), nephron structure, glomerulus (including renal capsule, glomus), and blood vessels.
2. Renal section plane displays 28 positions, nephron displays 19 positions, and glomerulus displays 14 positions.
3. Material: Advanced PVC

JY/A6102 Glomerulus

Features:

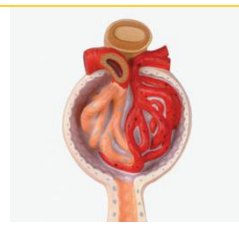
- Size: 120 times enlarged
- Material: Advanced PVC



JY/A6103 Nephron

Features:

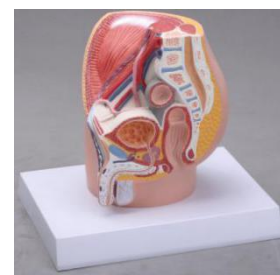
- Size: 700 times enlarged
- Material: Advanced PVC



JY/A6107-1 Male Pelvis

Features:

1. The model consists of 4 parts and is mounted on a board.
2. Shows rectum, bladder with prostate and testicular duct, and external genital organs.
3. Size: Life size
4. Material: Advanced PVC



Anatomy



Human anatomy

JY/A6108 Male Genital Organs

Features:



1. The model is dissected in median.
2. Shows the penis, prostate, bladder, seminal vesicle, spermatic cord and inguinal canal.
3. 12 positions are displayed.
4. Size: Life size

JY/A6107-2 Female Pelvis

Features:

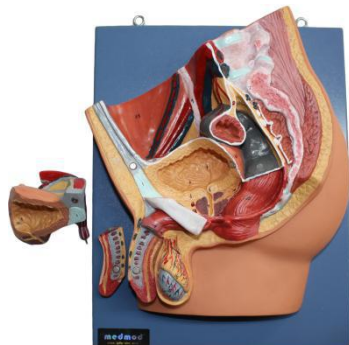
1. The model, mounted on a board, shows female genital organs with bladder and rectum.
2. Size: 1/2 Life size
3. Material: Advanced PVC



JY/A6110-1 Median Section of Male Pelvis

Features:

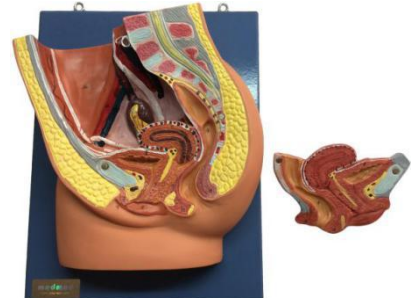
1. The model consists of 4 parts and is mounted on a board.
2. Shows rectum, bladder with prostate and testicular duct, and external genital organs.
3. Size: Life size
4. Material: Advanced PVC



JY/A6110-2 Median Section of Female Pelvis

Features:

1. The model shows female genital organs with bladder and rectum.
2. The model is mounted on a board and separated into 2 parts. 27 positions are displayed.
3. Size: Life size
4. Material: Advanced PVC



JY/A6111 Female Genital Organ

Features:

1. Shows the internal and external female genital organs.
2. The model consists of 4 parts.
3. 13 positions are displayed.
4. Size: Life size
5. Material: Advanced PVC



JY/A6112 Female Internal Genital Organ

Features:

1. The model shows coronal section of uterus and vagina, and the back shows coronal section of ovary and ureter.
2. 23 positions are displayed.
3. Size: Life size
4. Material: Advanced PVC



JY/A6114

Female Pelvis with Blood Vessels and Nerves

Features:

1. The model shows representation of the external and internal genital organs with the pelvis floor with network of nerves and vessels.
2. 71 positions are displayed.
3. Size: Life size
4. Material: Advanced PVC



JY/A6115 Female Inner Genital Organ

Features:

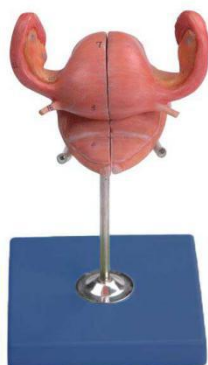


1. The front of the model shows coronal section of uterus and vagina, and the back shows coronal section of ovary and ureter.
 2. 19 positions are displayed.
 3. Size: 7cm*15cm*12 cm
- Material: Advanced PVC

JY/A6116 Anatomical Uterus

Features:

1. The model is dissected in sagittal sections, shows bladder, uterus, vagina, ureter and ovary.
2. This model consists of 2 parts and 15 positions are displayed.
3. Size: Life size
4. Material: Advanced PVC



JY/A6117

Mammary Gland in Resting Period

Features:

1. Separated into 2 parts, mounted on a base and 12 positions displayed.
2. Size: 14cm*12cm*10 cm
3. Material: Advanced PVC



JY/A6118 Mammary Gland in Lactation

Features:

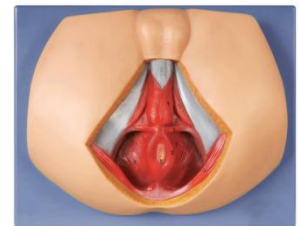
1. Separated into 2 parts, mounted on a base and 12 positions displayed.
 2. Size: 18cm*11cm*12cm
 3. Material: Advanced PVC
- G.W.: 1 kg



JY/A6119 Male Perineum Anatomy

Features:

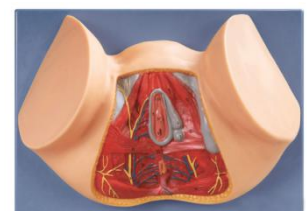
1. Show the scope of male perineum, the anterior urogenital triangle (urogenital region), the posterior triangle anus (anal region) and the anatomical structure of perineum (including the genital organ, perineal muscles, etc); 12 positions are displayed.
2. Size: Life size
3. Material: Advanced PVC



JY/A6120 Female Perineum Anatomy

Features:

1. Show the scope of female perineum, the anterior urogenital triangle (urogenital region), the posterior triangle anus (anal region) and the anatomical structure of perineum (including the genital organ, perineal muscles, nerves and blood vessels, etc); 20 positions are displayed.
2. Size: Life size
3. Material: Advanced PVC



Anatomy



Human anatomy

JY/A6126 Spermiogenesis Model

Features:



1. Display the processes of sperm development
2. Size: 10000 times enlarged
3. Material: Advanced PVC

JY/A6018 Circulatory System Model

Features:

1. Introduce main arteries and veins of the body.
2. 70 positions are displayed.
3. Size: 1/2 time of life size
4. Material: Advanced PVC and paint



JY/A6019 Magnified Artery and Vein Model

Features:

1. The model shows magnified artery and vein.
2. 23 positions are displayed.
3. Size: 55cm*30cm*21cm
4. Material: Advanced PVC



JY/A6020 Artery and Vein Model

Features:

1. The model shows magnified artery and vein.
2. Material: Advanced PVC



JY/A6021 Electronic Model and Lesser Circulation

Features:

1. Simulate cardiac cycle, greater and lesser circulations.
2. Size: 49cm*23cm*91cm



JY/A6022

Electronic Heart Best and Blood Circulation Model

Features:

1. The model demonstrates cardiac cycle and blood circulation.
2. Size: 49cm*23cm*91cm



JY/A6023 Electronic Compensatory Circulation

Features:

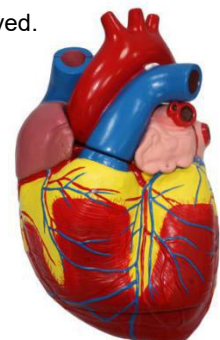
1. Demonstrate compensatory circulation in normal condition and obstruction condition.
2. Size: 49cm*23cm*91cm



JY/A6024 Adult Heart Model

Features:

1. The model shows aortic arch, coronal section of atrium and ventricle. 39 positions are displayed.
2. Size: 3 times of life size
3. Material: Advanced PVC



JY/A6025 Heart Model

Features:

1. The model shows aortic arch, coronal section of atrium and ventricle, right auricle, left atrium and heart pass.
2. Size: Life size, 2 parts
3. Material: Advanced PVC



JY/A6026 Heart Model (Life size)

Features:

1. The model shows aortic arch, coronal section of atrium and ventricle, right auricle and left atrium.
2. 25 positions are displayed.
3. Size: Life size
3. Material: Advanced PVC



JY/A6027 Heart Model (2 times enlarged)

Features:

1. The model shows aortic arch, coronal section of atrium and ventricle, right auricle and left atrium.
2. 25 positions are displayed.
3. Material: Advanced PVC
4. Size: 2 times enlarged



JY/A6028 Child Heart Model

Features:

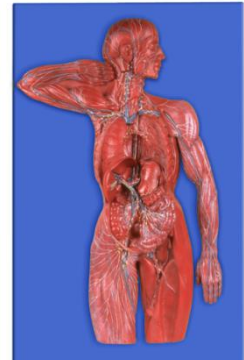
1. The model shows the coronal section of atrium and ventricle.
2. 25 positions are displayed.
3. Size: 1 times enlarged
4. Material: Advanced PVC



JY/A6029 Lymphatic System

Features:

1. The model indicates the structure of the lymphatic system.
2. 23 positions are displayed.
3. Size: 76cm*49cm*8.5cm
4. Material: Advanced PVC



JY/A6030 Eye Model

Features:

1. The model can be dissected on the longitudinal plane to show internal details.
2. Dissected into 6 parts, 12 positions are displayed.
3. Size: 6 times enlarged
4. Material: Advanced PVC and paint



JY/A6031 Eye Model

Features:

1. The model can be dissected on the longitudinal plane to show internal details.
2. The model consists of 6 parts.
3. Size: 3 times of life size



JY/A6032 Eyeball

Features:

1. The model can be dissected on the horizontal plane to show internal details.
2. Cornea, iris, lens, and vitreous body can be removed.
3. Mounted on base.
4. Dissected into seven parts. 31 positions are displayed.
5. Size: Four times life size
6. Material: Advanced PVC

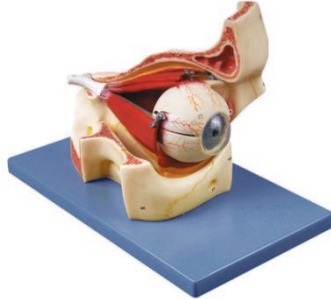




JY/A6033 Eyeball with Part of Orbi

Features:

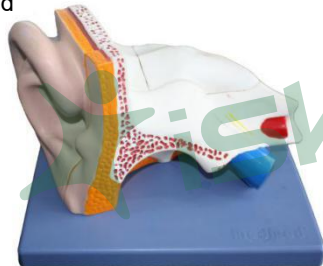
1. The eyeball is dissected horizontally including optic nerve entering base of the skull and ocular muscles.
2. Dissected into 10 parts. 8 positions are displayed.



JY/A6036 Ear Anatomy

Features:

1. Shows the external, middle, and inner ear.
2. Removable parts include: eardrum, incus, stapes, cochlea and labyrinth with vestibular and cochlea nerves.
3. Mounted on base.
4. Size: Three times enlarged
5. Material: Advanced PVC



JY/A6037 Enlarged Ear

Features:

1. Shows the external, middle and inner ear.
2. Removable parts include auricle, external auditory meatus, eardrum, tympanic membrane, auditory ossicle, labyrinth, etc.
3. 58 positions are displayed.
4. Size: 4 times enlarged.
5. Material: Advanced PVC and paint



JY/A6038 Auditory Ossicles Model

Features:

1. Consists of three parts:malleus, incus, stapes
2. 11 positions are displayed.
3. Size: 16 times of life size
4. Material: Advanced PVC

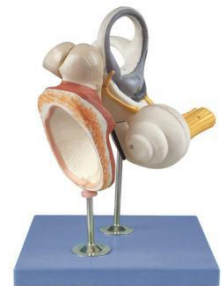


JY/A6039

Inner Ear, Auditory Ossicle and Tympanic Membrane

Features:

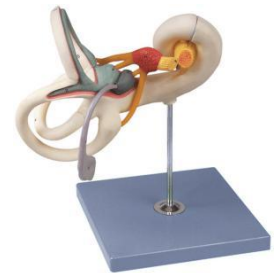
1. Consists of three parts: inner ear, auditory ossicle and tympanic membrane.
2. 20 positions are displayed.
3. Size: Four times of life size
4. Material: Advanced PVC and paint



JY/A6040 Labyrinth Model

Features:

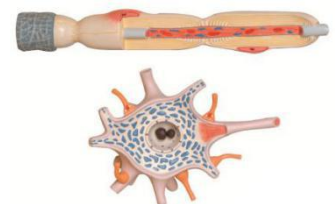
1. The superior semicircular canal and vestibule are open, showing the saccule and utricle.
2. Size:18 times of life size
3. Material: Advanced PVC



JY/A6041 Neuron Model

Features:

1. Consists of two parts, including neuron body and neuron fiber.
2. Shows neuraxon hillock, dendritic arbor, neurofilament, etc.
3. Size: 2500 times of life size
4. Material: Advanced PVC



JY/A6043 Skeletal Muscular Fibre

Features:

1. Inner membrane of skeletal muscle fiber, nucleus of fibroblast, nucleus of muscle cell, actin filament, myofibrilla, neuraxon, end-plate, presynaptic membrane, postsynaptic membrane, etc.
2. Size: 4000 times of life size
3. Material: Advanced PVC



JY/A6044 Skeletal Muscular

Features:

1. Inner membrane of skeletal muscle fiber, nucleus of fibroblast, nucleus of muscle cell, actin filament, myofibrilla, neuraxon, end-plate, presynaptic membrane, postsynaptic membrane, etc.
2. 19 positions are displayed.
3. Size: 4000 time of life size
4. Material: Advanced PVC



JY/A6045 Bone Structure

Features:

1. The model shows that the electron microscope amplification model of bone structure.
2. Material: Imported PVC materials and paint



JY/A6046 Bone Tissue Model

Features:

1. Bone structure integrity, intuitive structure, obvious.
2. Material: Advanced PVC



JY/A6047 Blood Cell Model

Features:

1. Size: 2000 times of life size
2. Material: Advanced PVC



JY/A6048 Animal Cell Model

Features:

1. Size: 20000 times of life size
2. Material: Advanced PVC



JY/A6049 Nervous System

Features:

1. The model shows the structure of central nerves, peripheral nerves, including spinal nerves radiated from central system to other parts of body.
2. 33 positions are displayed.
3. Size: 1/2 life size
4. Material: Advanced PVC



JY/A6050 Spinal Cord In the Spinal Canal

Features:

1. Shows brain, cerebral nerves, spinal cord and spinal nerves.
2. 47 positions are displayed.
3. Size: 1/2 life size
4. Material: Advanced PVC

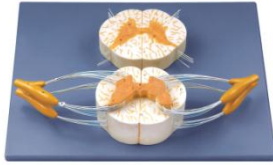




JY/A6051 Spinal Cord with Nerve Branches

Features:

1. Shows anatomy of spinal cord and nerves.
2. 21 positions are displayed.
3. Size: Five times enlarged.

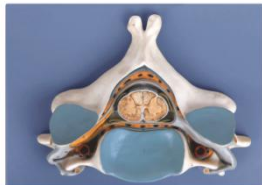


JY/A6052

Fifth Cervical Vertebra with Spinal Cord and Nerve

Features:

1. Fifth cervical vertebra with spinal artery, spinal vein, spinal nerve, etc.
2. Size: Seven times of life size
3. Material: Advanced PVC



JY/A6053 Cervical Vertebra with Spinal Cord

Features:

1. Cervical vertebra, spinal artery, spinal vein, spinal nerve, etc.
2. 21 positions are displayed.
3. Size: 8cm*17cm*15cm
4. Material: Advanced PVC



JY/A6054 Thoracic Vertebra with Spinal Cord

Features:

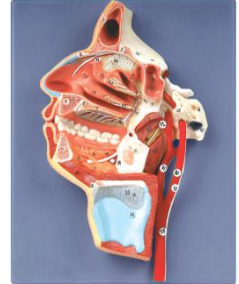
1. Shows spinal nerves, spinal ganglion and spinal cord in cross-section.
2. 22 positions are displayed.
3. Size: 9cm*18cm*18.5cm
4. Material: Advanced PVC



JY/A6056 Mouth, Nose, Pharynx and Larynx with Vessels and Nerves

Features:

1. The model shows the interior parts of the cavity of mouth and pharynx with network of vessels and trigeminal nerve.
2. Size: Life size
3. Material: Advanced PVC



JY/A6059 Electric Model of Autonomic Nerves

Features:

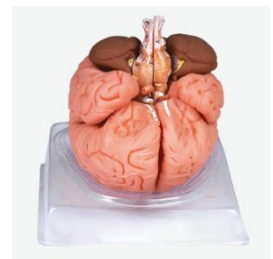
1. The model shows the operative paths of lower centrum, sympathetic and parasympathetic nerves.
2. Size: 60cm*24cm*85cm
3. Material: Advanced PVC



JY/A6060 Brain Model

Features:

1. This model consists of 8 parts, such as the sagittal section of brain, hemicerebrum, cerebellum, brainstem, etc. and shows the structure of hemicerebrum, interbrain, cerebellum, midbrain and brain bridge, medulla.
2. 98 positions are displayed.
3. Size: life size
4. Material: Advanced PVC



JY/A6062

Brain Model with Functional Region Painted

Features:

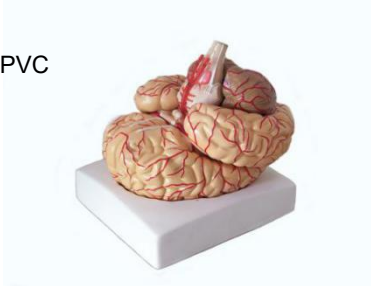
1. Size: Life size
2. Material: Advanced PVC



JY/A6061 Brain Model with Artery

Features:

1. The model shows arterial network of vessels.
2. Separated into 9 parts.
3. 127 positions arl and parietal lobes temporal and occipital lobes, brainstem cerebellum displayed.
4. Size: Life size
5. Material: Advanced PVC



JY/A6067 Brain Lobe Model

Features:

1. Size: Life size
2. Material: Advanced PVC



JY/A6068

Functional Localization of Cerebral Cortex

Features:

1. Size: Life size
2. Material: Advanced PVC



JY/A6063 4D Brain Model

Features:

1. Size: 32 parts, 1/2 life size
2. Material: Advanced PVC



JY/A6069 Functional Zones of Cerebral Cortex

Features:

1. Size: Life size
2. Material: Advanced PVC



JY/A6064 Grand Brain

Features:

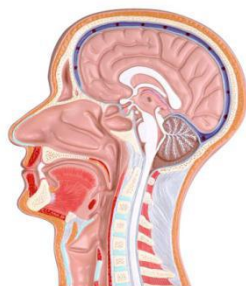
1. Consists of 4 parts.
2. Size: Twice enlarged
3. Material: Advanced PVC



JY/A6065 Sagittal Section of Human Head

Features:

1. The model included mimic muscular system with the main superficial arteries, veins and nerves and the area of the neck.
2. Size: Life size
3. Material: Advanced PVC



JY/A6070 Right Brain with Different Functional Area

Features:

1. Size: Life size
2. Material: Advanced PVC



Anatomy



Human anatomy

JY/A6071 Right Brain Model

Features:

1. Size: Life size
2. Material: Advanced PVC



JY/A6072 Half Head Model

Features:

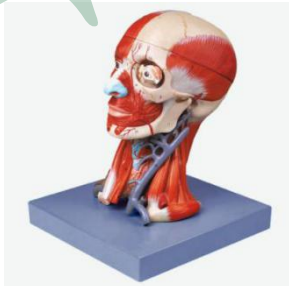
1. The model included mimic muscular system with the main superficial arteries, veins and nerves and the area of the neck.
2. Size: Life size
3. Material: Advanced PVC



JY/A6073 Head with Muscles

Features:

1. Separated into 10 parts: Cranium, eye, cerebral falx, right half of the brain, left half of the brain, cervical vein.
2. 165 positions are displayed.
3. Size: Life size
4. Material: Advanced PVC



JY/A6074

Head and Neck with Vessels, Nerves and Brain

Features:

1. Separated into 19 parts, such as: Mimic muscular system with the deep-set muscles, left temporomaxillary articulation sternocleidomastoid muscle, trapezium muscle pectoral major muscle, deltoid muscle clavicle Eyes eith muscles and nerves cranium brain with arteries
2. 190 positions are displayed.
3. Size: 34cm *37cm *20.5cm
4. Material: Advanced PVC



JY/A6075 Magnified Thalamus Model

Features:

1. Separated into 7 parts and 20 positions are displayed.
2. Material: Advanced PVC



JY/A6076 Brainstem

Features:

1. The model consists of two sagittal sections. One shows left side of the brainstem, and the other shows the right.
2. It demonstrates the anatomical structure of the brainstem, including midbrain, brain bridge, medulla, interbrain and brain nerves.
3. Size: Life size
4. Material: Advanced PVC



JY/A6077 Brain with Arteries

Features:

1. Altogether in 9 parts.
2. 12 pairs of cranial nerves and the basilar arteries
3. 129 positions are displayed.
3. Size: Life size
4. Material: Advanced PVC



JY/A6121 Electronic Model of Hypothalamic Hypophyseal System

Features:

Demonstrate the relationship between the hormone secreting from hypothalamus or pituitary body and different target organs.



JY/A6122 Endocrine Organ Model

Features:

1. The model is mounted on a base and display consists of pituitary gland, thyroid gland, endocrine gland and endocrine tissue. It parathyroid gland, adrenal gland, pancreatic island, testicle and ovary.
2. Material: Advanced PVC



JY/A6127 Skin Section

Features:

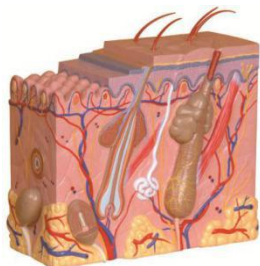
1. Shows layers if skin, first rudiments of hair, sweat gland, sense organs of skin.
2. Separated into 4 parts and 25 positions are displayed.
3. Size: 50 times life size
4. Material: Imported PVC



JY/A6128 Skin Block

Features:

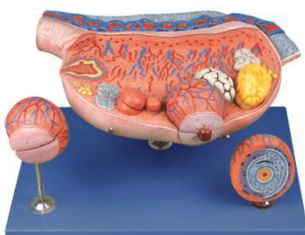
1. The model shows the scalp with hair in different planes of section.
2. 26 positions are displayed.
3. Size: 70 times life size
4. Material:Advanced PVC



JY/A6130 Enlarged Ovary

Features:

1. This model consists of 8 parts, including ovary, follicles, ovium, ovulation, ovum, corpus luteum, and corpus albicans. It demonstrates the procedure of ovum's development.
2. 10 positions are displayed.
3. Size: 24cm*36.5cm*11cm
4. Material: Imported PVC



JY/A6131 Fertilization Process Simulator

Features:

1. Shows two frontal sections through female genital organs.
2. Mounted on a board. 15 positions are displayed.
3. Size: Twice life size
4. Material: Advanced PVC



JY/A6132

Human Fertilization and Early Embryogeny

Features:

1. Shows the development from ovum to the fetus in third month.
2. 16 positions are displayed.
3. Size: 45cm*54cm*8cm
4. Material: Advanced PVC



JY/A6133

Human Fertilization and Intermediate Embryogeny

Features:

1. Fecundation to the embryo of fourth week.
2. Size: 45cm*55cm*5cm
3. Material: Advanced PVC



JY/A6134 Embryo

Features:

1. The embryo model is about 4 weeks old, and mounted on a stand.
2. 12 positions are displayed.
3. Size: 14cm*12cm*6 cm
4. Material: Advanced PVC

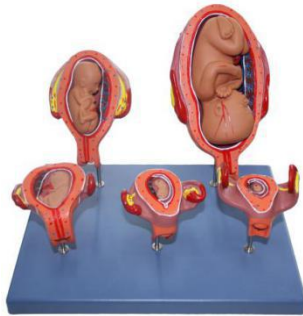




JY/A6135 Fetus Development Model

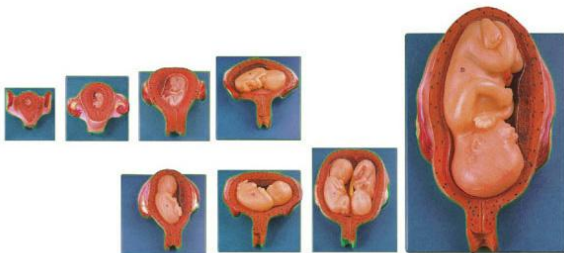
Features:

1. Size: Life size ,5 parts
2. Material: Advanced PVC



JY/A6137 Embryonic Development

Features:



1. The model includes 8 parts showing the uterus with embryo and fetus from the first to the seventh month pregnancy.

2. JY/A6137/1 First Month

JY/A6137/2 Second Month

JY/A6137/3 Third Month

JY/A6137/4 Fourth Month

JY/A6137/5 Fifth Month

JY/A6137/6 Sixth Month

JY/A6137/7 Seventh Month

JY/A6137/8 Fifth Month Twins

3. Size: Life size

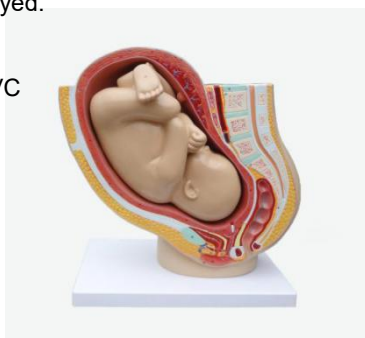
4. Material: Advanced PVC

JY/A6138

Pelvis with Uterus in the Ninth Month Pregnancy

Features:

1. Right half of the female pelvis in median section.
2. 38 positions are displayed.
3. Size: 2 parts, life size
4. Material: Advanced PVC



JY/A6140 Demonstration Model of Childbirth

Features:

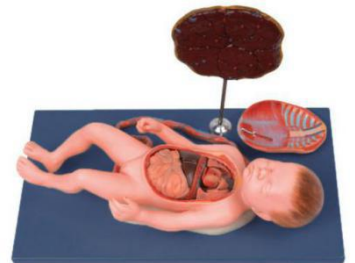


1. The model shows the delivery procedure.
2. Consists of uterus, fetus, placenta.
3. Size: Life size

JY/A6141 Fetus Viscus and Placenta

Features:

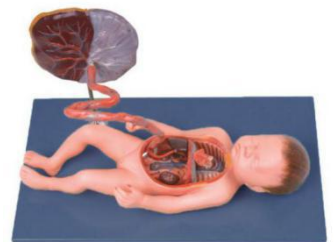
1. Term fetus with placenta, umbilical cord and internal organs.
2. 13 positions are displayed.
3. Size: Life size
4. Material: Advanced PVC



JY/A6142 Fetal Circulatory System

Features:

1. The model shows thoracic, abdominal cavity, heart, umbilical cord and placenta, venous and arterial ducts.
2. Size: Life size, 43cm*16cm*10cm
3. Material: Advanced PVC



JY/A6143 Placenta Model

Features:

1. The model shows the structure of placenta and the relation between placenta and umbilical cord.
2. 7 positions are displayed.
3. Size: Life size
4. Material: Advanced PVC

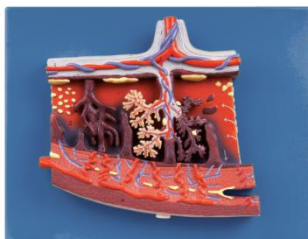


JY/A6144

Enlarged Model of Placenta

Features:

1. The model shows the structure of human placenta in cross section.
2. 14 positions are displayed.
3. Size: 20cm*22cm*4cm
4. Material: Advanced PVC



JY/A4023

Osteoporosis Model

Features:



JY/A4024

Osteoporosis Model

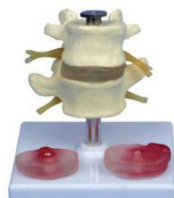
Features:



JY/A4019

Inter-vertebra Disc with Pathologic Symptom, life size

Features:



JY/A4025

Diabetes Model

Features:



JY/A4018

4 Stages Diseased Vertebrae, life size

Features:



JY/A4015

Pulmonary Pathological Model

Features:



JY/A4021

Pathological Model of the Rectum

Features:



JY/A4022

Diseased Large Intestines

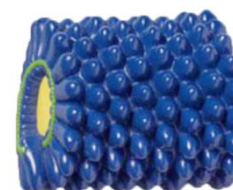
Features:



JY/A4001

Baculovirus Model

Features:



Anatomy



Human anatomy

JY/A4002

HIV Model

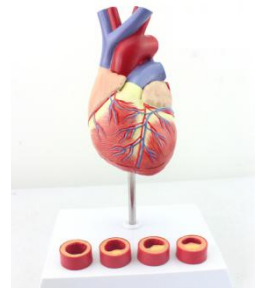
Features:



JY/A4042

Heart with Thrombus Model

Features:



JY/A4003

Uterus Pathological Model

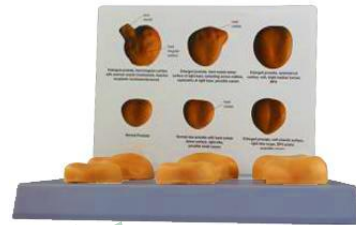
Features:



JY/A4031

Prostate Pathological Model

Features:



JY/A4004

Diseased Breast Model

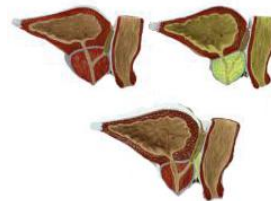
Features:



JY/A4034

Prostate Pathological Model

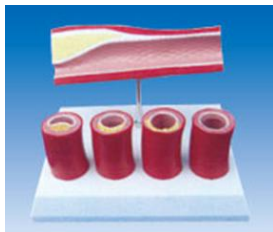
Features:



JY/A4007

Thrombus Model

Features:



JY/A4032

Lumbar Disc Herniation Demonstration Model

Features:



JY/A4033
Esophagus Pathological Model

Features:



JY/A4038
Bronchial Pulmonary Pathological Model

Features:



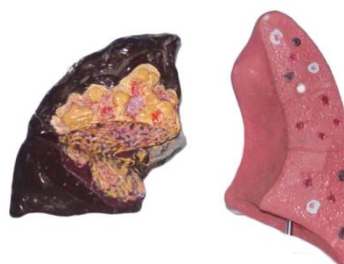
JY/A4035
Pathological Vessel Model

Features:



JY/A4039
Pathological Pulmonary Model

Features:



JY/A4036
Skin Lesion Model

Features:



JY/A4040
Pathological Pancreatic Duodenal Gallbladder Model

Features:



JY/A4037
Hypertension Model

Features:



JY/A4041
Common Diseased Rectum Model

Features:

